



Epidemiology Unit

Ministry of Health & Indigenous Medical Services

231, De Saram Place, Colombo 10, Sri Lanka

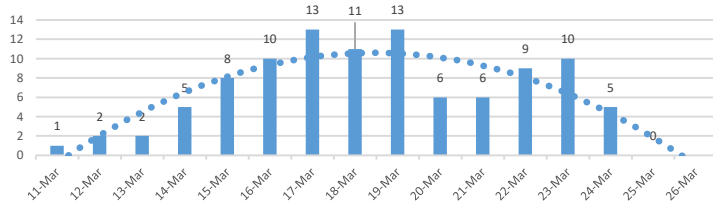
Tele: (+94 11) 2695112, 2681548, 4740490, 4740491, 4740492 Fax: (+94 11) 2696583 E-mail: chepid@slt.net.lk, epidunit@slt.net.lk Web: www.epid.gov.lk

Coronavirus disease 2019 (COVID-19) - Situation Report – 26.03.2020 – 10.00am

An outbreak of pneumonia of unknown reason was first reported on 31st December 2019 from Wuhan City in Hubei Province of China. On 7th Jan 2020, it was diagnosed as “Novel Corona Virus”. On 30/01, WHO has declared it as a Public Health Emergency of International Concern (PHEIC). On 11/02/2020 the WHO renamed the disease as COVID-19 and on 11/03/2020 declared as pandemic. The incubation period is reported as 2-14 days.

Local Situation

New patients - Sri Lanka



- Last confirmed patient identified on 24/03/2020
- Total number of confirmed – 102 (Recovered 3, Inward - 99)
- 99 patients- (IDH 88, BH Mulleriyawa 1, BH Welikanda 10)
- Total number of individuals in hospitals - 237

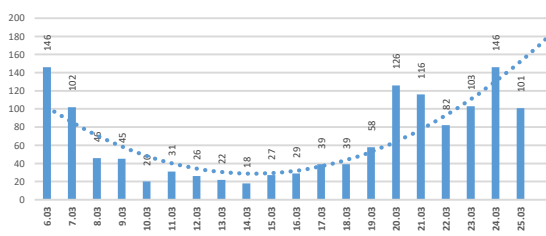
Hospital	Cumulative			Today 10am		
	SL	Foreigners	Total	SL	Foreigners	Total
NIID	547	76	623	98	2	100
NHSL	80	5	85	6	0	6
TH Ragama	100	2	102	10	1	11
TH Karapitiya	109	16	125	5	0	5
TH A'pura	49	2	51	1	0	1
TH Kurun.	117	1	118	8	0	8
TH Jaffna	24	1	25	0	0	0
NH Kandy	57	6	63	2	0	2
TH Battico.	20	0	20	2	0	2
DGH Gampaha	103	4	107	15	0	15
DGH Negombo	134	12	146	8	0	8
TH Rathn.	76	0	76	2	0	2
PGH Badulla	23	0	23	2	0	2
LRH	25	0	25	0	0	0
DMH	7	0	7	1	0	1
DGH Polon'wa	62	6	68	8	0	8
TH Kalubowila	16	0	16	0	0	0
Castle St TH	7	0	7	0	0	0
BH Ham'thota	57	0	57	10	0	10
BH Mona'gala	19	0	19	0	0	0
BH Welikanda	42	1	43	24	1	25
DGH Kaluthara	81	0	81	8	0	8
Chest H. Welisara	6	0	6	2	0	2
BH Mulleriya	1	0	1	1	0	1
BH Homagama	20	1	21	16	1	17
Dr Neville F. Ho	3	0	3	3	0	3
Total	Incorrect to total as transfers counts in both the institutions		232	5		237

Source : Epidemiology Unit, Disease Surveillance System

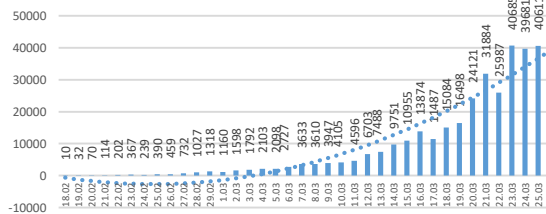
Global Situation

- 414,179 – Laboratory_confirmed cases (81,848 – China, 332,331 – Outside China)
 - 18,440 deaths (3287 – China, 15,153 outside China)
 - Patients are reported from 195 countries/territories
- Ref. WHO situation report - 25/03/2020

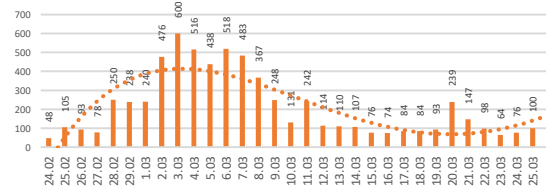
New Patients-China



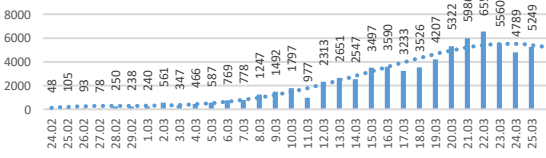
New Patients Outside China



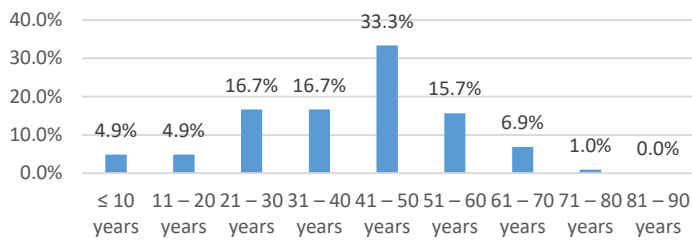
New Patients - S. Korea



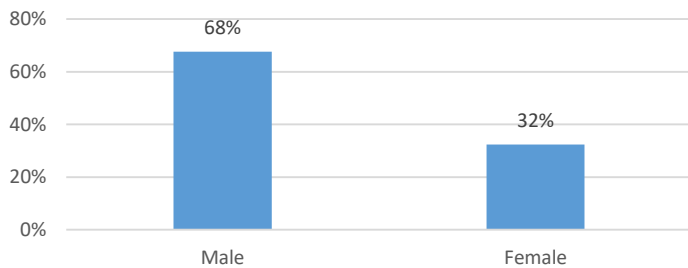
New Patients - Italy



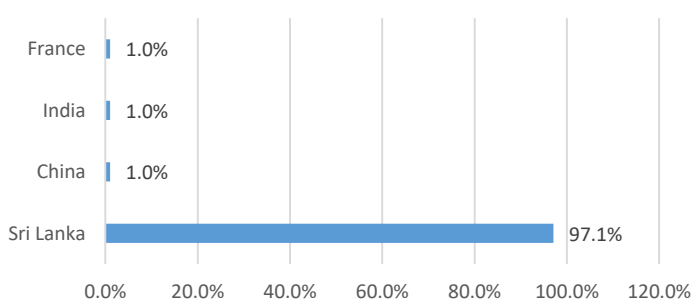
Age distribution of COVID-19 confirmed in Sri Lanka



Gender distribution of COVID-19 confirmed in Sri Lanka



COVID-19 confirmed in Sri Lanka - Nationality



District Distribution of Confirmed Patients

DISTRICT	Count
COLOMBO	22
KALUTARA	14
GAMPAHA	10
PUTTALAM	9
RATNAPURA	3
KURUNEGALA	1
GALLE	1
KEGALLE	1
BATTICOLOA	1
BADULLA	1
JAFFNA	1
MATARA	1
KANDY	0
MATALE	0
NUWARAELIYA	0
HAMBANTOTA	0
KILINOCHCHI	0
MANNAR	0
VAVUNIA	0
MULLATIVU	0
AMPARA	0
TRINCOMALEE	0
ANURADHAPURA	0
POLONNARUWA	0
MONERAGALA	0
KALMUNAI	0
QUARANTINE CENTERS	34
FOREIGNERS	3
Total	102