

Coronavirus disease (COVID-19)

Situation Report - 131

Data as received by WHO from national authorities by 10:00 CEST, 30 May 2020

Highlights

WHO has published [key planning recommendations for mass gatherings in the context of the current COVID-19 outbreak](#). The document provides guidance on containing risks of COVID-19 transmission associated with mass gathering events.

The UN and WHO have [urged governments around the world](#) to take the mental health consequences of the pandemic seriously, and ensure widespread availability of mental health support. WHO discusses this in a [recently released article](#) and has published [guidelines for communities](#) and a [children's book](#).

An [article](#) released by WHO Regional Office for Europe introduces recently published [technical guidance on preventing and managing the COVID-19 pandemic across long-term care services](#).

WHO has released a [framework for decision-making](#) that proposes a step-wise approach to the assessment of the relative risks and benefits of conducting mass vaccination campaigns in the context of COVID-19 (see '[Subject in Focus](#)' below).

Situation in numbers (by WHO Region)

Total (new cases in last 24 hours)

Globally	5 817 385 cases (116 048)	362 705 deaths (5 017)
Africa	96 902 cases (3 973)	2 482 deaths (55)
Americas	2 677 500 cases (64 408)	154 608 deaths (3 396)
Eastern Mediterranean	489 921 cases (14 502)	12 078 deaths (245)
Europe	2 122 350 cases (19 776)	179 353 deaths (975)
South-East Asia	249 525 cases (11 445)	7 157 deaths (313)
Western Pacific	180 446 cases (1 944)	7 014 deaths (33)

Subject in Focus: Framework for decision-making: implementation of mass vaccination campaigns in the context of COVID-19

For countries affected by vaccine-preventable diseases and high impact diseases (VPD/HID) and COVID-19 outbreaks, determining the best course of action may be challenging. Countries must weigh the benefits of a safe and effective intervention to reduce mortality and morbidity, against the risks of increasing transmission of a new disease that may burden essential health services. The starting point for such considerations is a risk-benefit analysis that reviews the epidemiological evidence and balances the short- and medium-term public health consequences of implementing or postponing mass vaccination campaigns, against a potential increase in COVID-19 transmission.

In order to support this process, WHO has developed a [document](#) that

- i. outlines a common framework for decision-making for the conduct of preventive and outbreak response campaigns;
- ii. offers principles to consider when deliberating the implementation of mass vaccination campaigns for prevention of increased risk of VPD/HID among susceptible populations; and
- iii. and details the risks and benefits of conducting vaccination campaigns to respond to VPD/HID outbreaks.

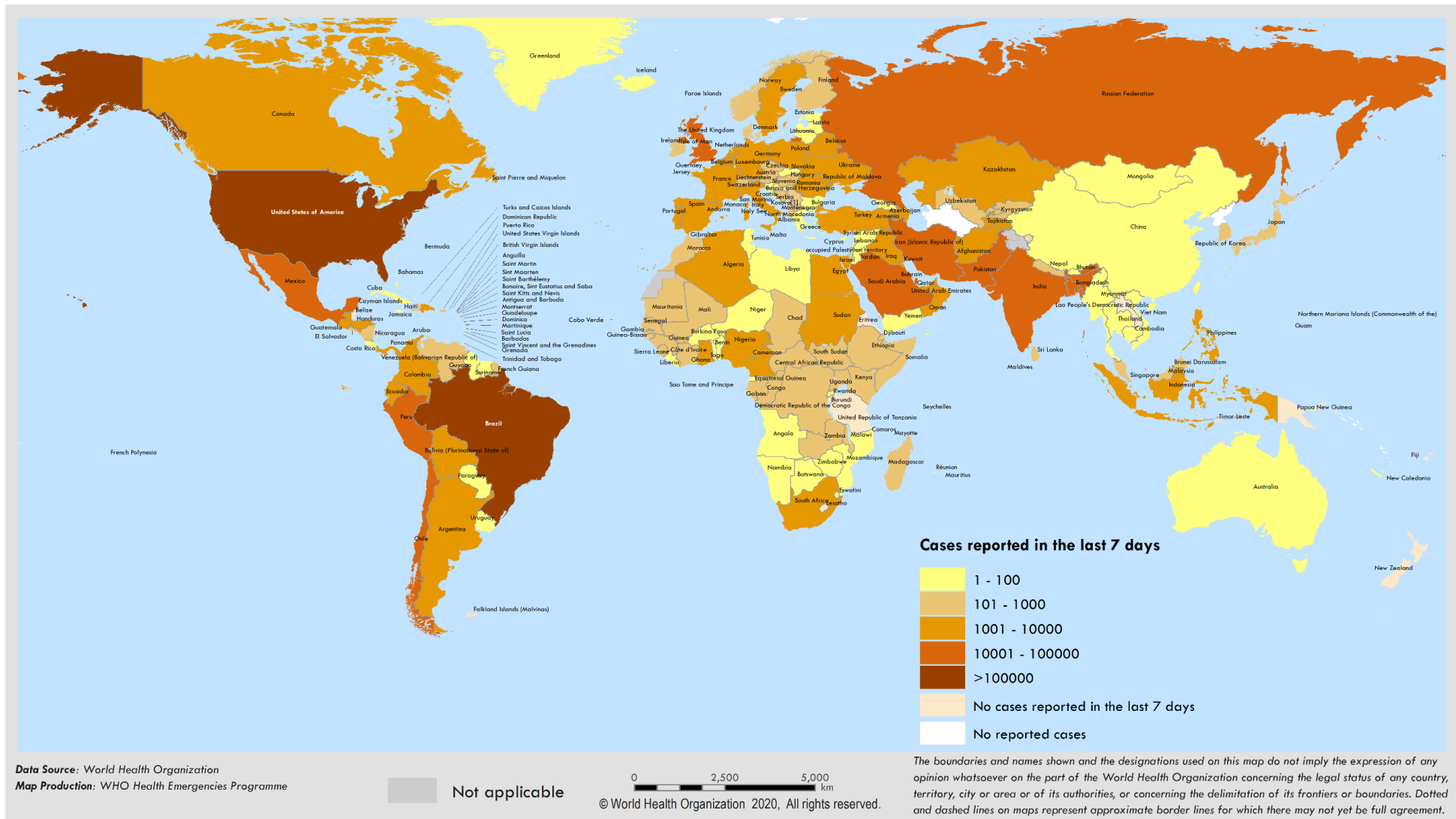
The framework proposes a five steps approach, each accompanied by a set of principles and criteria to consider during the decision-making process:

- Step 1: Assess the potential impact of the VPD/HID outbreak using key epidemiological criteria.
- Step 2: Assess the potential benefits of a mass vaccination campaign and the country capacity to implement it safely and effectively.
- Step 3: Consider the potential risk of increased COVID-19 transmission associated with the mass vaccination campaign.
- Step 4: Determine the most appropriate actions considering the COVID-19 epidemiological situation.
- Step 5: If a decision is made to proceed with a mass vaccination campaign, implement best practice.

The document also provides recommendations on how to safely organize a mass vaccination campaign, including the organization of vaccination sites and specific recommendations for vaccinators.

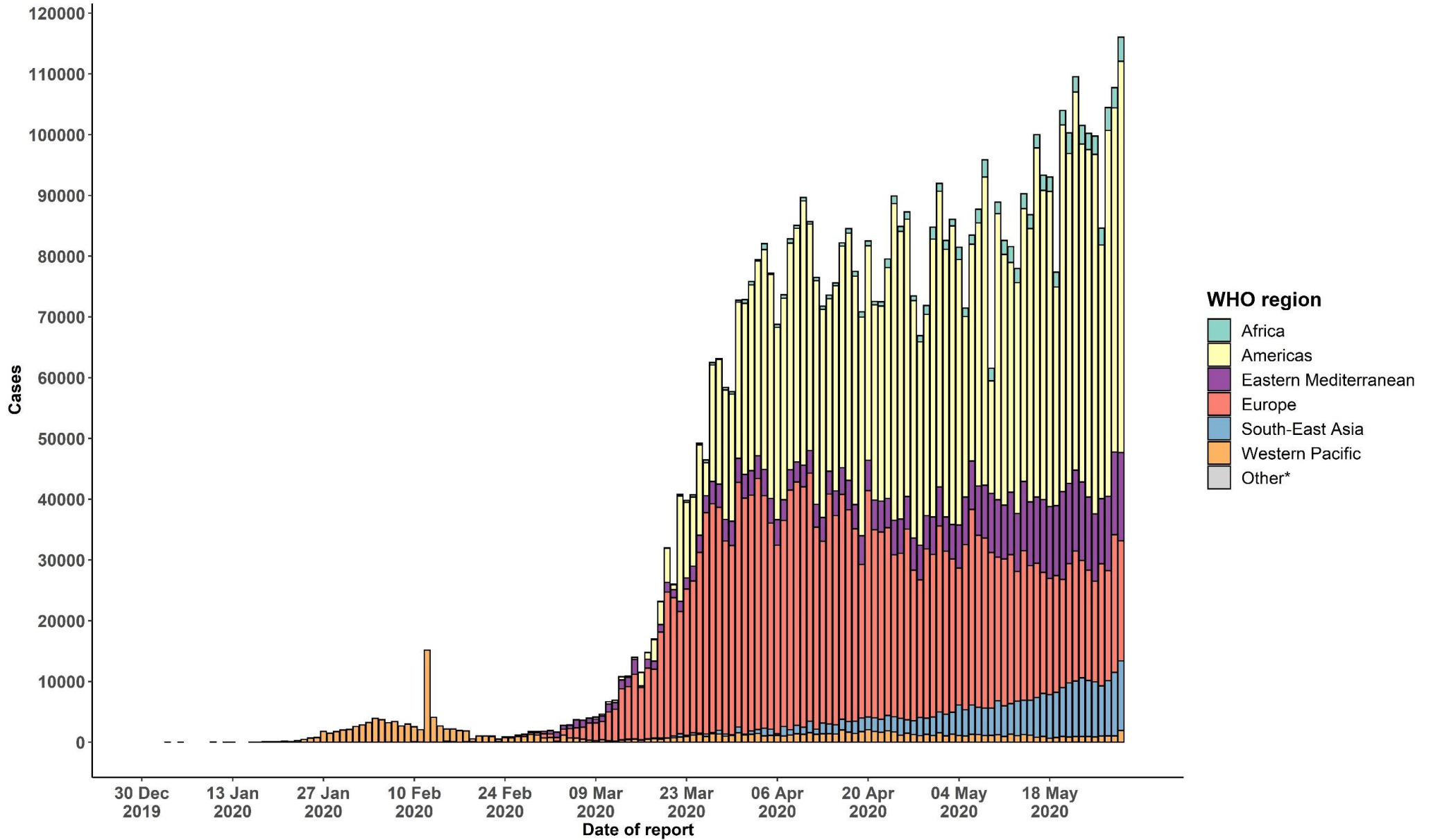
Surveillance

Figure 1. Number of confirmed COVID-19 cases reported in the last seven days by country, territory or area, 24 May to 30 May**



**See Annex 1 for data, table and figure notes.

Figure 2. Number of confirmed COVID-19 cases, by date of report and WHO region, 30 December 2019 through 30 May 2020**



**See Annex 1 for data, table and figure notes.

Table 1. Countries, territories or areas with reported laboratory-confirmed COVID-19 cases and deaths, by WHO region. Data as of 10 AM CEST, 30 May 2020**

Reporting Country/Territory/Area	Total confirmed cases	Total confirmed new cases	Total deaths	Total new deaths	Transmission classification ¹	Days since last reported case
Africa						
South Africa	29 240	1 837	611	34	Community transmission	0
Nigeria	9 302	387	261	2	Community transmission	0
Algeria	9 134	137	638	8	Community transmission	0
Ghana	7 616	313	34	0	Community transmission	0
Cameroon	5 436	0	177	0	Community transmission	3
Guinea	3 656	103	22	0	Community transmission	0
Senegal	3 429	81	41	0	Community transmission	0
Democratic Republic of the Congo	2 832	0	68	0	Community transmission	1
Côte d'Ivoire	2 750	109	32	0	Community transmission	0
Gabon	2 613	182	15	1	Community transmission	0
Kenya	1 745	127	62	4	Community transmission	0
Guinea-Bissau	1 256	61	8	0	Community transmission	0
Mali	1 226	32	73	1	Community transmission	0
Zambia	1 057	0	7	0	Community transmission	2
Equatorial Guinea	1 043	0	12	0	Community transmission	6
South Sudan	994	0	10	0	Clusters of cases	1
Ethiopia	968	137	8	1	Clusters of cases	0
Niger	955	0	64	0	Community transmission	2
Central African Republic	874	119	1	0	Clusters of cases	0
Burkina Faso	847	0	53	0	Community transmission	1
Sierra Leone	829	17	45	0	Community transmission	0

Reporting Country/Territory/Area	Total confirmed cases	Total confirmed new cases	Total deaths	Total new deaths	Transmission classification ¹	Days since last reported case
Chad	759	33	65	0	Community transmission	0
Madagascar	698	42	5	3	Clusters of cases	0
Congo	587	16	19	0	Community transmission	0
United Republic of Tanzania	509	0	21	0	Community transmission	22
Togo	428	6	13	0	Community transmission	0
Mauritania	423	77	20	1	Clusters of cases	0
Uganda	410	0	0	0	Sporadic cases	1
Cabo Verde	405	15	4	0	Clusters of cases	0
Rwanda	355	6	0	0	Sporadic cases	0
Mauritius	335	1	10	0	Clusters of cases	0
São Tomé and Príncipe	295	0	10	0	Clusters of cases	3
Eswatini	279	0	2	0	Clusters of cases	1
Liberia	273	4	27	0	Community transmission	0
Malawi	273	70	4	0	Clusters of cases	0
Mozambique	234	1	2	0	Clusters of cases	0
Benin	218	0	3	0	Community transmission	1
Zimbabwe	149	17	4	0	Sporadic cases	0
Angola	81	8	4	0	Clusters of cases	0
Comoros	43	0	2	0	Community transmission	5
Burundi	42	0	1	0	Clusters of cases	12
Eritrea	39	0	0	0	Sporadic cases	41
Botswana	35	0	1	0	Clusters of cases	5
Gambia	25	0	1	0	Sporadic cases	7

Reporting Country/Territory/Area	Total confirmed cases	Total confirmed new cases	Total deaths	Total new deaths	Transmission classification ¹	Days since last reported case
Namibia	23	1	0	0	Sporadic cases	0
Seychelles	11	0	0	0	Clusters of cases	53
Lesotho	2	0	0	0	Sporadic cases	7
Territoriesⁱⁱ						
Mayotte	1 699	29	21	0	Clusters of cases	0
Réunion	470	5	1	0	Clusters of cases	0
Americas						
United States of America	1 694 864	19 606	100 304	1 415	Community transmission	0
Brazil	438 238	26 417	26 754	1 156	Community transmission	0
Peru	141 779	5 874	4 099	116	Community transmission	0
Chile	90 638	3 695	944	54	Community transmission	0
Canada	88 856	954	6 918	119	Community transmission	0
Mexico	81 400	3 377	9 044	447	Community transmission	0
Ecuador	38 571	100	3 334	21	Community transmission	0
Colombia	25 366	1 262	822	19	Community transmission	0
Dominican Republic	16 531	463	488	3	Community transmission	0
Argentina	14 702	769	510	9	Community transmission	0
Panama	12 131	403	320	5	Community transmission	0
Bolivia (Plurinational State of)	8 387	619	293	13	Community transmission	0
Honduras	4 752	112	196	2	Community transmission	0
Guatemala	4 348	203	80	12	Community transmission	0
El Salvador	2 278	84	42	3	Community transmission	0
Cuba	2 005	22	82	0	Clusters of cases	0
Haiti	1 443	123	35	1	Community transmission	0

Reporting Country/Territory/Area	Total confirmed cases	Total confirmed new cases	Total deaths	Total new deaths	Transmission classification ¹	Days since last reported case
Venezuela (Bolivarian Republic of)	1 327	82	11	0	Community transmission	0
Costa Rica	1 000	16	10	0	Clusters of cases	0
Paraguay	917	17	11	0	Community transmission	0
Nicaragua	885	0	35	0	Community transmission	1
Uruguay	811	8	22	0	Clusters of cases	0
Jamaica	569	0	9	0	Clusters of cases	1
Guyana	150	11	11	0	Clusters of cases	0
Trinidad and Tobago	116	0	8	0	Sporadic cases	32
Bahamas	101	1	11	0	Clusters of cases	0
Barbados	92	0	7	0	Clusters of cases	5
Antigua and Barbuda	25	0	3	0	Clusters of cases	26
Saint Vincent and the Grenadines	25	0	0	0	Sporadic cases	1
Grenada	23	0	0	0	Clusters of cases	3
Belize	18	0	2	0	Sporadic cases	45
Saint Lucia	18	0	0	0	Sporadic cases	25
Dominica	16	0	0	0	Clusters of cases	49
Saint Kitts and Nevis	15	0	0	0	Sporadic cases	39
Suriname	12	0	1	0	Sporadic cases	1
Territoriesⁱⁱ						
Puerto Rico	3 647	161	132	1	Community transmission	0
French Guiana	436	27	1	0	Clusters of cases	0
Martinique	197	0	14	0	Clusters of cases	7
Guadeloupe	162	1	14	0	Clusters of cases	0
Bermuda	140	1	9	0	Clusters of cases	0

Reporting Country/Territory/Area	Total confirmed cases	Total confirmed new cases	Total deaths	Total new deaths	Transmission classification ¹	Days since last reported case
Cayman Islands	140	0	1	0	Clusters of cases	1
Aruba	101	0	3	0	Sporadic cases	24
Sint Maarten	78	0	15	0	Sporadic cases	16
United States Virgin Islands	69	0	6	0	Clusters of cases	19
Saint Martin	40	0	3	0	Sporadic cases	3
Curaçao	20	0	1	0	Sporadic cases	1
Falkland Islands (Malvinas)	13	0	0	0	Clusters of cases	34
Turks and Caicos Islands	12	0	1	0	Sporadic cases	32
Montserrat	11	0	1	0	Sporadic cases	46
British Virgin Islands	8	0	1	0	Sporadic cases	14
Bonaire, Sint Eustatius and Saba	7	0	0	0	No cases	4
Saint Barthélemy	6	0	0	0	Sporadic cases	60
Anguilla	3	0	0	0	Sporadic cases	56
Saint Pierre and Miquelon	1	0	0	0	Sporadic cases	52
Eastern Mediterranean						
Iran (Islamic Republic of)	146 668	2 819	7 677	50	Community transmission	0
Saudi Arabia	81 766	1 581	458	17	Clusters of cases	0
Pakistan	66 457	2 429	1 395	78	Clusters of cases	0
Qatar	52 907	1 993	36	3	Community transmission	0
United Arab Emirates	33 170	638	260	2	Pending	0
Kuwait	25 184	1 072	194	9	Clusters of cases	0
Egypt	22 082	1 289	879	34	Clusters of cases	0
Afghanistan	14 443	784	248	2	Clusters of cases	0
Bahrain	10 449	397	15	0	Clusters of cases	0

Reporting Country/Territory/Area	Total confirmed cases	Total confirmed new cases	Total deaths	Total new deaths	Transmission classification ⁱ	Days since last reported case
Oman	9 820	811	41	1	Clusters of cases	0
Morocco	7 714	71	202	0	Clusters of cases	0
Iraq	5 873	416	185	6	Clusters of cases	0
Sudan	4 521	175	233	38	Community transmission	0
Djibouti	2 914	0	20	0	Clusters of cases	1
Somalia	1 828	0	72	0	Sporadic cases	1
Lebanon	1 172	4	26	0	Clusters of cases	0
Tunisia	1 071	3	48	0	Community transmission	0
Jordan	730	2	9	0	Clusters of cases	0
Yemen	287	5	66	5	Pending	0
Syrian Arab Republic	122	0	4	0	Community transmission	1
Libya	118	13	5	0	Clusters of cases	0
Territoriesⁱⁱ						
occupied Palestinian territory	625	0	5	0	Clusters of cases	1
Europe						
Russian Federation	396 575	8 952	4 555	181	Clusters of cases	0
The United Kingdom	271 226	2 095	38 161	324	Community transmission	0
Spain	238 936	658	29 039	2	Community transmission	0
Italy	232 248	516	33 229	87	Community transmission	0
Germany	181 196	738	8 489	39	Community transmission	0
Turkey	162 120	1 141	4 489	28	Community transmission	0
France	146 657	535	28 660	52	Community transmission	0
Belgium	58 061	212	9 443	55	Community transmission	0
Netherlands	46 126	176	5 931	28	Community transmission	0

Reporting Country/Territory/Area	Total confirmed cases	Total confirmed new cases	Total deaths	Total new deaths	Transmission classification ¹	Days since last reported case
Belarus	40 764	906	224	5	Community transmission	0
Sweden	36 476	749	4 350	84	Community transmission	0
Portugal	31 946	350	1 383	14	Community transmission	0
Switzerland	30 745	32	1 656	2	Community transmission	0
Ireland	24 876	35	1 645	6	Community transmission	0
Ukraine	23 204	393	696	17	Community transmission	0
Poland	23 155	330	1 051	13	Community transmission	0
Romania	18 982	191	1 240	11	Community transmission	0
Israel	16 809	0	281	0	Pending	1
Austria	16 594	51	668	0	Community transmission	0
Denmark	11 593	81	568	0	Community transmission	0
Serbia	11 354	54	242	1	Pending	0
Kazakhstan	10 382	450	37	0	Clusters of cases	0
Czechia	9 196	56	319	0	Clusters of cases	0
Armenia	8 927	251	127	7	Community transmission	0
Norway	8 411	10	236	0	Clusters of cases	0
Republic of Moldova	7 896	171	289	7	Community transmission	0
Finland	6 776	33	314	1	Pending	0
Azerbaijan	4 989	230	58	2	Clusters of cases	0
Luxembourg	4 012	4	110	0	Clusters of cases	0
Hungary	3 841	0	517	0	Community transmission	1
Tajikistan	3 686	123	47	0	Pending	0
Uzbekistan	3 513	50	14	0	Clusters of cases	0
Greece	2 909	3	175	0	Clusters of cases	0

Reporting Country/Territory/Area	Total confirmed cases	Total confirmed new cases	Total deaths	Total new deaths	Transmission classification ⁱ	Days since last reported case
Bulgaria	2 499	14	139	3	Clusters of cases	0
Bosnia and Herzegovina	2 484	22	152	0	Community transmission	0
Croatia	2 245	0	103	1	Community transmission	1
North Macedonia	2 130	52	126	4	Clusters of cases	0
Estonia	1 859	8	67	1	Pending	0
Iceland	1 805	0	10	0	Community transmission	2
Kyrgyzstan	1 722	60	16	0	Clusters of cases	0
Lithuania	1 662	6	68	0	Community transmission	0
Slovakia	1 520	0	28	0	Clusters of cases	1
Slovenia	1 473	0	108	0	Clusters of cases	1
Albania	1 122	23	33	0	Clusters of cases	0
Latvia	1 064	3	24	0	Clusters of cases	0
Cyprus	941	0	17	0	Clusters of cases	1
Andorra	764	0	51	0	Community transmission	1
Georgia	757	11	12	0	Community transmission	0
San Marino	687	0	42	0	Community transmission	1
Malta	616	0	7	0	Sporadic cases	1
Montenegro	324	0	9	0	Clusters of cases	24
Monaco	98	0	1	0	Sporadic cases	6
Liechtenstein	83	0	1	0	Pending	34
Holy See	12	0	0	0	Sporadic cases	23
Territoriesⁱⁱ						
Kosovo ^[1]	1048	0	30	0	Community transmission	1
Isle of Man	336	0	24	0	Pending	8

Reporting Country/Territory/Area	Total confirmed cases	Total confirmed new cases	Total deaths	Total new deaths	Transmission classification ¹	Days since last reported case
Jersey	308	0	29	0	Community transmission	1
Guernsey	252	0	13	0	Community transmission	27
Faroe Islands	187	0	0	0	Pending	36
Gibraltar	158	1	0	0	Clusters of cases	0
Greenland	13	0	0	0	Pending	1
South-East Asia						
India	173 763	7 964	4 971	265	Clusters of cases	0
Bangladesh	42 844	2 523	582	23	Clusters of cases	0
Indonesia	25 216	678	1 520	24	Community transmission	0
Thailand	3 077	1	57	0	Clusters of cases	0
Maldives	1 591	78	5	0	Clusters of cases	0
Sri Lanka	1 558	28	10	0	Clusters of cases	0
Nepal	1 212	170	6	1	Sporadic cases	0
Myanmar	207	1	6	0	Clusters of cases	0
Bhutan	33	2	0	0	Sporadic cases	0
Timor-Leste	24	0	0	0	Clusters of cases	36
Western Pacific						
China	84 565	18	4 645	0	Clusters of cases	0
Singapore	33 860	611	23	0	Clusters of cases	0
Japan	16 804	85	886	12	Clusters of cases	0
Philippines	16 634	1 046	942	21	Community transmission	0
Republic of Korea	11 441	39	269	0	Clusters of cases	0
Malaysia	7 732	103	115	0	Clusters of cases	0

Reporting Country/Territory/Area	Total confirmed cases	Total confirmed new cases	Total deaths	Total new deaths	Transmission classification ⁱ	Days since last reported case
Australia	7 173	23	103	0	Clusters of cases	0
New Zealand	1 154	0	22	0	Clusters of cases	8
Viet Nam	327	0	0	0	Clusters of cases	3
Mongolia	179	18	0	0	Sporadic cases	0
Brunei Darussalam	141	0	2	0	Clusters of cases	22
Cambodia	125	1	0	0	Sporadic cases	0
Lao People's Democratic Republic	19	0	0	0	Sporadic cases	47
Fiji	18	0	0	0	Sporadic cases	39
Papua New Guinea	8	0	0	0	Sporadic cases	37
Territoriesⁱⁱ						
Guam	165	0	5	0	Clusters of cases	1
French Polynesia	60	0	0	0	Sporadic cases	24
Northern Mariana Islands (Commonwealth of the)	22	0	2	0	Pending	8
New Caledonia	19	0	0	0	Sporadic cases	1
Subtotal for all regions	5 816 644	116 048	362 692	5 017		
Other*	741	0	13	0	Not applicable	-
Grand total	5 817 385	116 048	362 705	5 017		

** See [Annex 1](#) for data, table and figure notes.

Technical guidance and other resources

- To view all technical guidance documents regarding COVID-19, please go to [this webpage](#).
- Updates from WHO regional offices
 - [WHO AFRO](#)
 - [WHO PAHO](#)
 - [WHO EMRO](#)
 - [WHO SEARO](#)
 - [WHO EURO](#)
 - [WHO WPRO](#)
- [Research and Development](#)
- [Online courses on COVID-19](#) and in [additional national languages](#)
- [The Strategic Preparedness and Response Plan](#) (SPRP) outlining the support the international community can provide to all countries to prepare and respond to the virus
- [WHO Health Emergency dashboard](#)
- [Weekly COVID-19 Operations Updates](#)

Recommendations and advice for the public

- [Protect yourself](#)
- [Questions and answers](#)
- [Travel advice](#)
- [EPI-WIN](#): tailored information for individuals, organizations and communities

Case definitions

WHO periodically updates the [Global Surveillance for human infection with coronavirus disease \(COVID-19\)](#) document which includes surveillance definitions.

Definition of COVID-19 death

COVID-19 death is defined for surveillance purposes as a death resulting from a clinically compatible illness in a probable or confirmed COVID-19 case, unless there is a clear alternative cause of death that cannot be related to COVID-19 disease (e.g. trauma). There should be no period of complete recovery between the illness and death.

Further guidance for certification and classification (coding) of COVID-19 as cause of death is available [here](#).

Annex 1: Data, table and figure notes

Caution must be taken when interpreting all data presented. Differences are to be expected between information products published by WHO, national public health authorities, and other sources using different inclusion criteria and different data cut-off times. While steps are taken to ensure accuracy and reliability, all data are subject to continuous verification and change. Case detection, definitions, testing strategies, reporting practice, and lag times differ between countries/territories/areas. These factors, amongst others, influence the counts presented, with variable underestimation of true case and death counts, and variable delays to reflecting these data at global level.

The designations employed, and the presentation of these materials do not imply the expression of any opinion whatsoever on the part of WHO concerning the legal status of any country, territory or area or of its authorities, or concerning the delimitation of its frontiers or boundaries. Dotted and dashed lines on maps represent approximate border lines for which there may not yet be full agreement. Countries, territories and areas are arranged under the administering WHO region.

The mention of specific companies or of certain manufacturers' products does not imply that they are endorsed or recommended by WHO in preference to others of a similar nature that are not mentioned. Errors and omissions excepted, the names of proprietary products are distinguished by initial capital letters.

[¹] All references to Kosovo should be understood to be in the context of the United Nations Security Council resolution 1244 (1999). In the map, number of cases of Serbia and Kosovo (UNSCR 1244, 1999) have been aggregated for visualization purposes.

Counts reflect laboratory-confirmed cases and deaths, based on [WHO case definitions](#), unless stated otherwise (see Country, territory, or area-specific updates and errata), and include both domestic and repatriated cases.

Other*: includes cases reported from international conveyances.

Due to the recent trend of countries conducting data reconciliation exercises which remove large numbers of cases or deaths from their total counts, WHO will now display such data as negative numbers in the “new cases” / “new deaths” columns as appropriate. This will aid readers in identifying when such adjustments occur. When additional details become available that allow the subtractions to be suitably apportioned to previous days, graphics will be updated accordingly. Prior situation reports will not be edited; see covid19.who.int for the most up-to-date data.

Additional table notes

ⁱ Transmission classification is based on a process of country/territory/area self-reporting. Classifications are reviewed on a weekly basis, may be revised as new information becomes available, and are based on the highest category reported. Differing degrees of transmission may be present within countries/territories/areas.

Categories:

- No cases: with no confirmed cases
- Sporadic cases: with one or more cases, imported or locally detected.
- Clusters of cases: experiencing cases, clustered in time, geographic location and/or by common exposures.
- Community transmission: experiencing larger outbreaks of local transmission defined through an assessment of factors including, but not limited to: large numbers of cases not linkable to transmission chains; large numbers of cases from sentinel lab surveillance; and/or multiple unrelated clusters in several areas of the country/territory/area.
- Pending: transmission classification has not been reported to WHO.

ii “Territories” include territories, areas, overseas dependencies and other jurisdictions of similar status.

Country, territory, or area-specific updates and errata

No new updates/errata. For previous information, see the [log of major changes and errata in WHO daily aggregate case and death count data](#).