

Coronavirus disease (COVID-19)

Situation Report – 150

Data as received by WHO from national authorities by 10:00 CEST, 18 June 2020

Highlights

The investigation of a cluster of COVID-19 cases in Beijing associated with a wholesale market continues. As of 18 June, 10AM CEST, Chinese authorities have reported a total of 172 cases since 11 June, including 158 in Beijing, 10 linked cases in Hebei Province, 2 in Liaoning Province, 1 in Sichuan Province and 1 in Zhejiang Province. Three genetic sequences related to Xinfadi cluster have been uploaded to the GISAID database. WHO is closely monitoring the situation and is in close contact with national authorities in China.

Chile has reported 36 179 cases in last 24 hours. Of these 36 179 cases, 4 757 correspond to new cases and the remaining 31 422 cases were added by the national authorities following data reconciliation activity. WHO is closely monitoring the situation and is in close contact with the national authorities.

In today's '[Subject in Focus](#)' below, we provide advice on caring for infants and young children of mothers with COVID-19.

Situation in numbers (by WHO Region)

Total (new cases in last 24 hours)

Globally	8 242 999 cases (181 232)	445 535 deaths (5 245)
Africa	194 539 cases (6 914)	4 482 deaths (136)
Americas	4 015 386 cases (115 527)	208 991 deaths (3 436)
Eastern Mediterranean	837 497 cases (20 039)	18 575 deaths (518)
Europe	2 471 792 cases (19 328)	190 304 deaths (722)
South-East Asia	521 582 cases (18 548)	15 921 deaths (423)
Western Pacific	201 462 cases (876)	7 249 deaths (10)

Subject in Focus: Advice on feeding and caring for infants and young children of mothers with COVID-19

WHO published [updated guidance](#) on clinical care, including feeding and caring for infants and young children of mothers with COVID-19 on 27 May 2020, replacing the previous guidance originally published on 13 March 2020.

WHO continues to advise that mothers with suspected or confirmed COVID-19 should be encouraged to initiate and continue breastfeeding. From the available evidence, mothers should be counselled that the benefits of breastfeeding substantially outweigh the potential risks for transmission.

Mother and infant should be enabled to remain together throughout the day and night and practise skin-to-skin contact, including kangaroo mother care, especially immediately after birth and when they first start breastfeeding, whether they or their infants have suspected or confirmed COVID-19.

Here is a snapshot of what's included in the [updated guidance](#):

Advice on mother-infant contact at birth

- Mothers should not be separated from their infants unless the mother is too sick to care for her baby. If the mother is unable to care for the infant another competent family caregiver should be identified.
- Neonates born to mothers with suspected or confirmed COVID-19 should be breastfed within one hour of birth. Early and uninterrupted skin-to-skin contact between mothers and infants should be facilitated and encouraged as soon as possible after birth, while applying necessary measures for infection prevention and control (IPC).
- If the newborn or infant is ill and requires specialist care (such as neonatal unit), arrangements should be made to allow the mother free access to the unit, with appropriate infection prevention and control (IPC) measures.

Advice for mothers who are severely ill

- In situations when severe illness in a mother prevents her from caring for her infant or prevents her from continuing direct breastfeeding, mothers should be encouraged and supported to express milk, and the breastmilk provided safely to the infant, while applying appropriate IPC measures.
- In the event that the mother is too unwell to breastfeed or express breastmilk, explore the viability of feeding with donor human milk. If this is not possible, consider wet nursing (defined as another woman breastfeeding the child) or appropriate breastmilk substitutes, informed by feasibility, safety, sustainability, cultural context, acceptability to mother and service availability.

- Mothers who are not able to initiate breastfeeding during the first hour after delivery should still be supported to breastfeed as soon as they are able. Assistance should be provided after recovery for relactation to re-establish a milk supply and continue breastfeeding.

General advice for mothers during all infant and childcare

- Breastfeeding mothers should be helped to clean her chest with soap and water if she has been coughing on it before breastfeeding. She does not need to wash her breasts prior to every breastfeed.
- While mothers are recommended to wear medical masks, if the mother does not have a medical mask, she should still be encouraged to continue breastfeeding as the benefits of breastfeeding outweigh the potential risks of transmission of the virus when breastfeeding while applying other IPC measures.

Best practices for breastfeeding

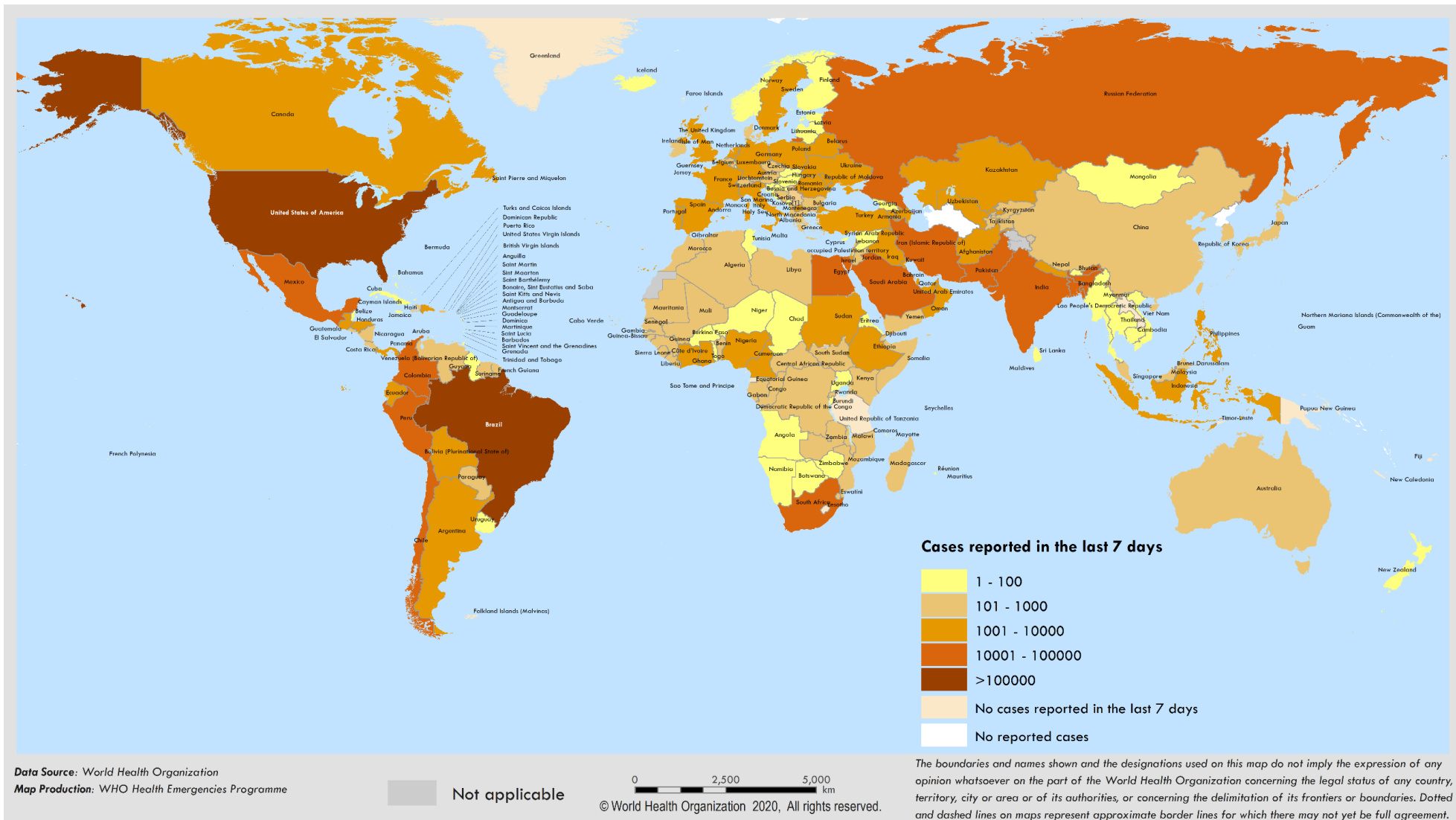
- There should be no promotion of breastmilk substitutes, feeding bottles and teats, pacifiers or dummies in any part of facilities providing maternity and newborn services, or by any of the staff. Health facilities and their staff should not give feeding bottles and teats or other products that are within the scope of the International Code of Marketing of Breast-milk Substitutes and its subsequent related WHA resolutions, to infants.

For more advice for healthcare workers or the public on feeding and care of infants and young children of mothers with COVID-19, please visit FAQs on [pregnancy, Childbirth and COVID-19](#) and [breastfeeding and COVID-19, for healthcare workers](#). In addition, health workers can also access training materials on breastfeeding and childbirth, for [iPhone](#) or [android phone](#) or [tablet](#)

- Infographics (tiles) re: breastfeeding and COVID-19:
 - https://www.who.int/images/default-source/infographics/pregnancy-childbirth-breastfeeding-and-covid-19/pregnancy-5-1200x1200.png?sfvrsn=a9443d35_6
 - https://www.who.int/images/default-source/infographics/pregnancy-childbirth-breastfeeding-and-covid-19/pregnancy-6-1200x1200.png?sfvrsn=77765469_6
 - https://www.who.int/images/default-source/infographics/pregnancy-childbirth-breastfeeding-and-covid-19/pregnancy-4-1200x1200.png?sfvrsn=c6ae660f_6
- Women with COVID-19 can breastfeed (video):
 - <https://www.who.int/health-topics/breastfeeding#> or
 - <https://www.facebook.com/WHO/videos/1652111638273546/> or
 - <https://www.youtube.com/watch?v=OFGiy6t7k5E>

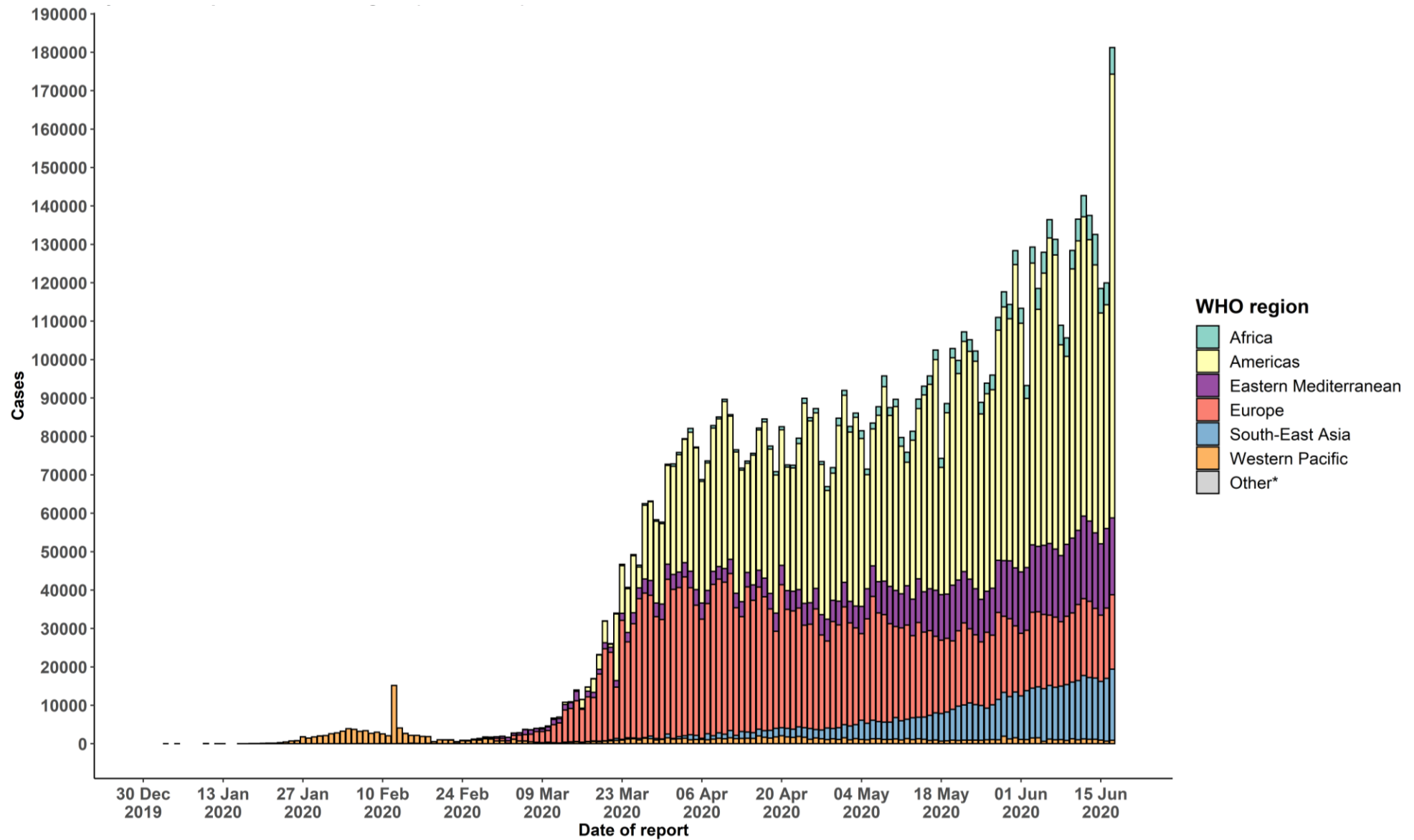
Surveillance

Figure 1. Number of confirmed COVID-19 cases reported in the last seven days by country, territory or area, 12 June to 18 June**



**See [Annex 1](#) for data, table and figure notes.

Figure 2. Number of confirmed COVID-19 cases, by date of report and WHO region, 30 December through 18 June**



**See [Annex 1](#) for data, table and figure notes.

Table 1. Countries, territories or areas with reported laboratory-confirmed COVID-19 cases and deaths, by WHO region. Data as of 10 AM CEST, 18 June 2020**

Reporting Country/ Territory/Area	Total confirmed cases	Total confirmed new cases	Total deaths	Total new deaths	Transmission classification ⁱ	Days since last reported case
Africa						
South Africa	80 412	4 078	1 674	49	Community transmission	0
Nigeria	17 735	587	469	45	Community transmission	0
Ghana	12 590	397	66	8	Community transmission	0
Algeria	11 268	121	799	11	Community transmission	0
Cameroon	9 864	0	276	0	Community transmission	2
Côte d'Ivoire	6 063	384	48	2	Community transmission	0
Senegal	5 369	122	73	3	Community transmission	0
Democratic Republic of the Congo	5 099	126	114	3	Community transmission	0
Guinea	4 668	29	26	0	Community transmission	0
Gabon	4 229	115	30	1	Community transmission	0
Kenya	4 044	184	107	2	Community transmission	0
Ethiopia	3 759	129	63	2	Community transmission	0
Central African Republic	2 564	154	18	4	Community transmission	0
Mauritania	2 057	170	93	2	Clusters of cases	0
Mali	1 890	5	107	1	Community transmission	0
South Sudan	1 807	31	31	1	Clusters of cases	0
Guinea-Bissau	1 492	0	15	0	Community transmission	1
Zambia	1 412	7	11	0	Community transmission	0
Madagascar	1 378	61	12	0	Clusters of cases	0
Sierra Leone	1 249	24	51	0	Community transmission	0
Equatorial Guinea	1 043	0	12	0	Community transmission	25

Reporting Country/ Territory/Area	Total confirmed cases	Total confirmed new cases	Total deaths	Total new deaths	Transmission classification ¹	Days since last reported case
Niger	1 020	4	67	1	Community transmission	0
Burkina Faso	899	4	53	0	Community transmission	0
Congo	883	0	27	0	Community transmission	2
Chad	854	1	74	0	Community transmission	0
Uganda	823	0	0	0	Sporadic cases	4
Cabo Verde	792	11	7	0	Clusters of cases	0
Mozambique	651	13	4	0	Clusters of cases	0
Rwanda	639	3	2	0	Sporadic cases	0
Benin	572	40	9	0	Community transmission	0
Malawi	572	8	6	0	Clusters of cases	0
Eswatini	563	43	4	0	Clusters of cases	0
Togo	537	0	13	0	Community transmission	1
Liberia	516	7	33	0	Community transmission	0
United Republic of Tanzania	509	0	21	0	Community transmission	41
Zimbabwe	401	10	4	0	Sporadic cases	0
Sao Tome and Principe	388	- 10	10	0	Clusters of cases	0
Mauritius	337	0	10	0	Clusters of cases	12
Comoros	197	0	3	0	Community transmission	1
Angola	155	13	7	1	Clusters of cases	0
Eritrea	131	10	0	0	Sporadic cases	0
Burundi	104	0	1	0	Clusters of cases	2
Botswana	79	19	1	0	Clusters of cases	0
Gambia	34	0	1	0	Sporadic cases	1

Reporting Country/ Territory/Area	Total confirmed cases	Total confirmed new cases	Total deaths	Total new deaths	Transmission classification ⁱ	Days since last reported case
Namibia	34	0	0	0	Sporadic cases	1
Seychelles	11	0	0	0	Clusters of cases	72
Lesotho	4	0	0	0	Sporadic cases	14
Territories ⁱⁱ						
Mayotte	2 345	12	29	0	Clusters of cases	0
Réunion	497	2	1	0	Clusters of cases	0
Americas						
United States of America	2 126 027	27 921	116 702	722	Community transmission	0
Brazil	923 189	34 918	45 241	1 282	Community transmission	0
Peru	237 156	4 164	7 056	196	Community transmission	0
Chile	220 628	36 179	3 615	232	Community transmission	0
Mexico	154 863	4 599	18 310	730	Community transmission	0
Canada	99 467	320	8 213	38	Community transmission	0
Colombia	54 931	1 868	1 801	75	Community transmission	0
Ecuador	48 490	547	4 007	37	Community transmission	0
Argentina	34 159	1 374	886	24	Community transmission	0
Dominican Republic	24 105	419	633	18	Community transmission	0
Panama	21 962	540	457	9	Community transmission	0
Bolivia (Plurinational State of)	19 883	810	659	27	Community transmission	0
Guatemala	10 706	434	418	19	Community transmission	0
Honduras	9 656	478	330	8	Community transmission	0
Haiti	4 547	106	80	4	Community transmission	0
El Salvador	4 066	125	79	3	Community transmission	0
Venezuela (Bolivarian Republic of)	3 150	88	27	1	Community transmission	0

Reporting Country/ Territory/Area	Total confirmed cases	Total confirmed new cases	Total deaths	Total new deaths	Transmission classification ⁱ	Days since last reported case
Cuba	2 280	7	84	0	Clusters of cases	0
Nicaragua	2 014	359	64	9	Community transmission	0
Costa Rica	1 796	52	12	0	Clusters of cases	0
Paraguay	1 308	5	13	1	Community transmission	0
Uruguay	849	1	24	1	Clusters of cases	0
Jamaica	621	0	10	0	Clusters of cases	1
Suriname	242	6	6	0	Clusters of cases	0
Guyana	171	12	12	0	Clusters of cases	0
Trinidad and Tobago	123	0	8	0	Sporadic cases	2
Bahamas	104	0	11	0	Clusters of cases	2
Barbados	97	0	7	0	Clusters of cases	2
Saint Vincent and the Grenadines	29	2	0	0	Sporadic cases	0
Antigua and Barbuda	26	0	3	0	Clusters of cases	4
Grenada	23	0	0	0	Clusters of cases	22
Belize	22	1	2	0	Sporadic cases	0
Saint Lucia	19	0	0	0	Sporadic cases	12
Dominica	18	0	0	0	Clusters of cases	5
Saint Kitts and Nevis	15	0	0	0	No cases	58
Territoriesⁱⁱ						
Puerto Rico	6 003	52	147	0	Community transmission	0
French Guiana	1 554	133	5	0	Community transmission	0
Martinique	202	0	14	0	Clusters of cases	11
Cayman Islands	193	6	1	0	Clusters of cases	0
Guadeloupe	171	0	14	0	Clusters of cases	5

Reporting Country/ Territory/Area	Total confirmed cases	Total confirmed new cases	Total deaths	Total new deaths	Transmission classification ¹	Days since last reported case
Bermuda	144	0	9	0	Clusters of cases	3
Aruba	101	0	3	0	No cases	43
Sint Maarten	77	0	15	0	Sporadic cases	12
United States Virgin Islands	73	0	6	0	Clusters of cases	1
Saint Martin	42	0	3	0	Sporadic cases	1
Curaçao	23	1	1	0	Sporadic cases	0
Falkland Islands (Malvinas)	13	0	0	0	No cases	53
Turks and Caicos Islands	12	0	1	0	No cases	51
Montserrat	11	0	1	0	No cases	65
British Virgin Islands	8	0	1	0	No cases	33
Bonaire, Sint Eustatius and Saba	7	0	0	0	No cases	23
Saint Barthélemy	6	0	0	0	No cases	79
Anguilla	3	0	0	0	No cases	75
Saint Pierre and Miquelon	1	0	0	0	No cases	71
Eastern Mediterranean						
Iran (Islamic Republic of)	195 051	2 612	9 185	120	Community transmission	0
Pakistan	160 118	5 358	3 093	118	Clusters of cases	0
Saudi Arabia	141 234	4 919	1 091	39	Clusters of cases	0
Qatar	83 174	1 097	82	2	Community transmission	0
Egypt	49 219	1 363	1 850	84	Clusters of cases	0
United Arab Emirates	43 364	382	295	2	Pending	0
Kuwait	37 533	575	306	3	Clusters of cases	0
Afghanistan	27 337	463	546	42	Clusters of cases	0
Oman	26 079	810	116	2	Clusters of cases	0

Reporting Country/ Territory/Area	Total confirmed cases	Total confirmed new cases	Total deaths	Total new deaths	Transmission classification ⁱ	Days since last reported case
Iraq	24 254	1 554	773	61	Clusters of cases	0
Bahrain	19 961	408	49	2	Clusters of cases	0
Morocco	8 997	66	213	1	Clusters of cases	0
Sudan	8 020	280	487	10	Community transmission	0
Djibouti	4 545	6	43	0	Clusters of cases	0
Somalia	2 696	38	88	0	Sporadic cases	0
Lebanon	1 489	16	32	0	Clusters of cases	0
Tunisia	1 128	3	50	1	Community transmission	0
Jordan	987	6	9	0	Clusters of cases	0
Yemen	906	17	245	30	Pending	0
Libya	482	15	10	0	Clusters of cases	0
Syrian Arab Republic	178	1	7	1	Community transmission	0
Territoriesⁱⁱ						
occupied Palestinian territory	745	50	5	0	Clusters of cases	0
Europe						
Russian Federation	561 091	7 790	7 660	182	Clusters of cases	0
The United Kingdom	299 255	1 115	42 153	184	Community transmission	0
Spain	244 683	355	27 136	0	Community transmission	0
Italy	237 828	328	34 448	43	Community transmission	0
Germany	187 764	580	8 856	26	Clusters of cases	0
Turkey	182 727	1 429	4 861	19	Community transmission	0
France	153 356	311	29 509	28	Community transmission	0
Belgium	60 244	89	9 675	12	Community transmission	0
Belarus	56 032	663	324	6	Community transmission	0

Reporting Country/ Territory/Area	Total confirmed cases	Total confirmed new cases	Total deaths	Total new deaths	Transmission classification ¹	Days since last reported case
Sweden	54 562	1 239	5 041	102	Community transmission	0
Netherlands	49 204	117	6 074	4	Community transmission	0
Portugal	37 672	336	1 523	1	Community transmission	0
Ukraine	34 063	829	966	23	Community transmission	0
Switzerland	31 100	37	1 677	0	Community transmission	0
Poland	30 701	506	1 286	14	Community transmission	0
Ireland	25 341	7	1 710	1	Community transmission	0
Romania	22 760	345	1 451	14	Community transmission	0
Israel	19 637	299	303	1	Pending	0
Armenia	18 698	665	309	7	Community transmission	0
Austria	17 115	17	687	6	Community transmission	0
Kazakhstan	15 877	335	100	12	Clusters of cases	0
Republic of Moldova	12 732	478	433	6	Community transmission	0
Serbia	12 522	96	257	1	Pending	0
Denmark	12 294	44	598	0	Community transmission	0
Azerbaijan	10 991	329	133	7	Clusters of cases	0
Czechia	10 162	51	333	2	Clusters of cases	0
Norway	8 660	29	243	1	Clusters of cases	0
Finland	7 117	5	326	0	Pending	0
Uzbekistan	5 697	136	19	0	Clusters of cases	0
Tajikistan	5 221	61	51	1	Pending	0
North Macedonia	4 482	193	210	9	Clusters of cases	0
Luxembourg	4 085	10	110	0	Clusters of cases	0
Hungary	4 079	1	568	1	Community transmission	0

Reporting Country/ Territory/Area	Total confirmed cases	Total confirmed new cases	Total deaths	Total new deaths	Transmission classification ⁱ	Days since last reported case
Bulgaria	3 542	89	184	3	Clusters of cases	0
Greece	3 203	55	187	2	Clusters of cases	0
Bosnia and Herzegovina	3 144	60	167	0	Community transmission	0
Kyrgyzstan	2 657	95	31	1	Clusters of cases	0
Croatia	2 258	3	107	0	Sporadic cases	0
Estonia	1 977	2	69	0	Clusters of cases	0
Iceland	1 815	3	10	0	Community transmission	0
Albania	1 788	66	39	1	Clusters of cases	0
Lithuania	1 778	2	76	0	Community transmission	0
Slovakia	1 561	9	28	0	Clusters of cases	0
Slovenia	1 513	4	109	0	Clusters of cases	0
Latvia	1 104	6	30	2	Sporadic cases	0
Cyprus	985	0	18	0	Clusters of cases	2
Georgia	893	5	14	0	Community transmission	0
Andorra	854	0	52	0	Community transmission	1
San Marino	709	14	42	0	Community transmission	0
Malta	662	6	9	0	Sporadic cases	0
Montenegro	333	7	9	0	Clusters of cases	0
Monaco	99	0	1	0	Sporadic cases	11
Liechtenstein	83	0	1	0	Pending	53
Holy See	12	0	0	0	Sporadic cases	42
Territoriesⁱⁱ						
Kosovo ^[1]	1 790	77	24	0	Community transmission	0
Isle of Man	336	0	24	0	Pending	27

Reporting Country/ Territory/Area	Total confirmed cases	Total confirmed new cases	Total deaths	Total new deaths	Transmission classification ¹	Days since last reported case
Jersey	316	0	30	0	Community transmission	1
Guernsey	252	0	13	0	Community transmission	46
Faroe Islands	187	0	0	0	Pending	55
Gibraltar	176	0	0	0	Clusters of cases	9
Greenland	13	0	0	0	Pending	20
South-East Asia						
India	366 946	12 881	12 237	334	Clusters of cases	0
Bangladesh	98 489	4 008	1 305	43	Community transmission	0
Indonesia	41 431	1 031	2 276	45	Community transmission	0
Nepal	7 177	586	20	1	Sporadic cases	0
Thailand	3 141	6	58	0	Clusters of cases	0
Maldives	2 120	26	8	0	Clusters of cases	0
Sri Lanka	1 924	9	11	0	Clusters of cases	0
Myanmar	263	1	6	0	Clusters of cases	0
Bhutan	67	0	0	0	Sporadic cases	2
Timor-Leste	24	0	0	0	Clusters of cases	55
Western Pacific						
China	84 903	36	4 645	0	Clusters of cases	0
Singapore	41 216	247	26	0	Clusters of cases	0
Philippines	27 238	457	1 108	5	Community transmission	0
Japan	17 668	40	935	4	Clusters of cases	0
Republic of Korea	12 257	59	280	1	Clusters of cases	0
Malaysia	8 515	10	121	0	Clusters of cases	0

Reporting Country/ Territory/Area	Total confirmed cases	Total confirmed new cases	Total deaths	Total new deaths	Transmission classification ⁱ	Days since last reported case
Australia	7 370	23	102	0	Clusters of cases	0
New Zealand	1 157	1	22	0	Clusters of cases	0
Viet Nam	335	0	0	0	Clusters of cases	1
Mongolia	197	0	0	0	Sporadic cases	5
Brunei Darussalam	141	0	3	0	Clusters of cases	41
Cambodia	129	1	0	0	Sporadic cases	0
Lao People's Democratic Republic	19	0	0	0	Sporadic cases	66
Fiji	18	0	0	0	Sporadic cases	58
Papua New Guinea	8	0	0	0	Sporadic cases	56
Territoriesⁱⁱ						
Guam	180	2	5	0	Clusters of cases	0
French Polynesia	60	0	0	0	Sporadic cases	43
Northern Mariana Islands (Commonwealth of the)	30	0	2	0	Pending	8
New Caledonia	21	0	0	0	Sporadic cases	8
Subtotal for all regions	8 242 258	181 232	445 522	5 245		
Other*	741	0	13	0	Not applicable	-
Grand total	8 242 999	181 232	445 535	5 245		

**See [Annex 1](#) for data, table and figure notes.

Technical guidance and other resources

- To view all technical guidance documents regarding COVID-19, please go to [this webpage](#).
- Updates from WHO regional offices
 - [WHO AFRO](#)
 - [WHO EMRO](#)
 - [WHO EURO](#)
 - [WHO PAHO](#)
 - [WHO SEARO](#)
 - [WHO WPRO](#)
- [Research and Development](#)
- [Online courses on COVID-19](#) and in [additional national languages](#)
- [The Strategic Preparedness and Response Plan](#) (SPRP) outlining the support the international community can provide to all countries to prepare and respond to the virus
- [WHO Coronavirus Disease \(COVID-19\) Dashboard](#)
- [Weekly COVID-19 Operations Updates](#)

Recommendations and advice for the public

- [Protect yourself](#)
- [Questions and answers](#)
- [Travel advice](#)
- [EPI-WIN](#): tailored information for individuals, organizations and communities

Case definitions

WHO periodically updates the [Global Surveillance for human infection with coronavirus disease \(COVID-19\)](#) document which includes surveillance definitions.

Definition of COVID-19 death

A COVID-19 death is defined for surveillance purposes as a death resulting from a clinically compatible illness in a probable or confirmed COVID-19 case, unless there is a clear alternative cause of death that cannot be related to COVID-19 disease (e.g. trauma). There should be no period of complete recovery between the illness and death.

Further guidance for certification and classification (coding) of COVID-19 as cause of death is available [here](#) and [here](#).

Annex 1: Data, table and figure notes

Caution must be taken when interpreting all data presented. Differences are to be expected between information products published by WHO, national public health authorities, and other sources using different inclusion criteria and different data cut-off times. While steps are taken to ensure accuracy and reliability, all data are subject to continuous verification and change. Case detection, definitions, testing strategies, reporting practice, and lag times differ between countries/territories/areas. These factors, amongst others, influence the counts presented, with variable underestimation of true case and death counts, and variable delays to reflecting these data at global level.

The designations employed, and the presentation of these materials do not imply the expression of any opinion whatsoever on the part of WHO concerning the legal status of any country, territory or area or of its authorities, or concerning the delimitation of its frontiers or boundaries. Dotted and dashed lines on maps represent approximate border lines for which there may not yet be full agreement. Countries, territories and areas are arranged under the administering WHO region.

The mention of specific companies or of certain manufacturers' products does not imply that they are endorsed or recommended by WHO in preference to others of a similar nature that are not mentioned. Errors and omissions excepted, the names of proprietary products are distinguished by initial capital letters.

[1] All references to Kosovo should be understood to be in the context of the United Nations Security Council resolution 1244 (1999). In the map, number of cases of Serbia and Kosovo (UNSCR 1244, 1999) have been aggregated for visualization purposes.

Counts reflect laboratory-confirmed cases and deaths, based on [WHO case definitions](#), unless stated otherwise (see Country, territory, or area-specific updates and errata), and include both domestic and repatriated cases.

Other*: includes cases reported from international conveyances.

Due to the recent trend of countries conducting data reconciliation exercises which remove large numbers of cases or deaths from their total counts, WHO will now display such data as negative numbers in the "new cases" / "new deaths" columns as appropriate. This will aid readers in identifying when such adjustments occur. When additional details become available that allow the subtractions to be suitably apportioned to previous days, graphics will be updated accordingly. Prior situation reports will not be edited; see covid19.who.int for the most up-to-date data.

Additional table notes

ⁱ Transmission classification is based on a process of country/territory/area self-reporting. Classifications are reviewed on a weekly basis and may be revised as new information becomes available. and. Differing degrees of transmission may be present within countries/territories/areas; classification is based on the highest category reported within a country/territory/area. Categories:

- No cases: with no confirmed cases
- Sporadic cases: with one or more cases, imported or locally detected
- Clusters of cases: experiencing cases, clustered in time, geographic location and/or by common exposures
- Community transmission: experiencing larger outbreaks of local transmission defined through an assessment of factors including, but not limited to: large numbers of cases not linkable to transmission chains; large numbers of cases from sentinel lab surveillance; and/or multiple unrelated clusters in several areas of the country/territory/area
- Pending: transmission classification has not been reported to WHO

ii “Territories” include territories, areas, overseas dependencies and other jurisdictions of similar status.

Country, territory, or area-specific updates and errata

- **Erratum: 17 June 2020, Israel:** Counts adjusted retrospectively to align with national authorities: 217 new cases were included.
- **Update 18 June 2020, Sao Tome and Principe:** Counts adjusted retrospectively by national authorities: 10 cases have been excluded.
- **Update 18 June 2020, Chile:** Counts adjusted retrospectively by national authorities to account for a backlog of cases. An additional 31 422 cases have been added.