

Coronavirus disease (COVID-19)

Situation Report – 119

Data as received by WHO from national authorities by 10:00 CEST, 18 May 2020

Highlights

The [73rd World Health Assembly](#) which opened today, will focus on the COVID-19 pandemic. Member States will deliver statements, report their progress in fighting the coronavirus, share knowledge on the evolving situation and consider a draft resolution on COVID-19. It is available [live online](#) in Arabic, Chinese, Russian, English, French, and Spanish.

[WHO has signed an agreement with the International Olympic Committee](#) (IOC) to work together to promote health through sport and physical activity. The agreement has a special focus on preventing non-communicable diseases (NCDs). This collaboration is timely because the current COVID-19 pandemic is particularly affecting people with NCDs.

[Flooding in Somalia has raised concerns of an upsurge in cholera cases as the country deals with a growing number of COVID-19 cases.](#) WHO's country office has sent urgently needed essential medical supplies, however funding for humanitarian operations in Somalia remains very low.

[Sony Music Latin and Global Citizen have released a new "Color Esperanza" track](#) with proceeds benefiting the Pan American Health Organization (PAHO) – WHO's Regional Office for the Americas - and its COVID-19 relief efforts throughout the Americas.

WHO has cautioned against recommending or administering unproven treatments to patients with COVID-19. In the '[Subject in Focus](#)' below, we highlight how the WHO Solidarity Trial is helping find an effective treatment for COVID-19.

Situation in numbers (by WHO Region)

Total (new cases in last 24 hours)

Globally	4 618 821 cases (93 324)	311 847 deaths (4 452)
Africa	61 163 cases (2 500)	1 748 deaths (38)
Americas	2 017 811 cases (50 879)	121 609 deaths (2 810)
Eastern Mediterranean	338 560 cases (11 992)	9 979 deaths (138)
Europe	1 890 467 cases (19 922)	167 173 deaths (1 222)
South-East Asia	141 593 cases (7 062)	4 582 deaths (231)
Western Pacific	168 515 cases (969)	6 743 deaths (13)

Subject in Focus: Accelerating a treatment with the Solidarity Trial

While the research for an effective treatment continues, until there is sufficient evidence, WHO has cautioned against recommending or administering unproven treatments to patients with COVID-19 or people self-medicating with them. The consensus among world experts is that potential exists but that far more studies are urgently needed to determine if existing anti-viral drugs can be effective to treat COVID-19. If these treatments prove to be effective, they could reduce the burden of COVID-19.

In order to fast-track this research, [WHO launched](#) the [Solidarity Trial](#) on March 18 – a large international clinical trial to help find an effective treatment for COVID-19. Enrolling patients in one single randomized trial will help facilitate the rapid worldwide comparison of candidate treatments and overcome the risk of multiple small trials not generating the strong evidence needed to determine the relative effectiveness of potential treatments.

Initially, the Solidarity Trial will compare four treatment options against the standard of care, based on evidence from laboratory, animal and clinical studies. These include: chloroquine or hydroxychloroquine, remdesivir, lopinavir/ritonavir, and lopinavir/ritonavir with interferon beta-1a. By enrolling patients in multiple countries, the Solidarity Trial aims to rapidly discover whether any of these existing drugs slow disease progression or improve survival. The primary outcome measurement is all-cause mortality, subdivided by severity of disease at the time of randomisation. The major secondary outcomes are duration of hospital stay and time to first receiving ventilation (or intensive care).

The Solidarity Trial is unlike any other clinical trial and its objective will be achieved through new ways of working that embrace:

- **Speed** to act fast now, to simplify procedures with a simple randomized control clinical trial protocol and a paperless / web-based randomization and data system allowing for rapid centralized analyses. The adaptive study design allows for quickly adding novel treatment arms while the trial is in progress or discontinuing some treatment arms that are proven ineffective or unsafe.
- **Scale** by prioritizing counties at highest risk and hospitals that have the most number of adults (age ≥18 years) in hospital with definite COVID-19 symptoms and no contra-indication to any of the study drugs; this approach ensures the greatest level of enrolment.
- **Access** by ensuring all countries can join the Solidarity Trial and receive WHO technical and financial support including access to all trial drugs free-of-charge, thanks to donations that WHO negotiated with five manufacturers.

Since its launch, over 100 countries have expressed an interest in participating in the Solidarity Trial and WHO is actively engaged with more than 60. The engagement involves multiple steps to support countries. Some of these steps include ethical and regulatory approvals of the WHO core protocol; the identification of hospitals that will participate in the trial; the training of hospital clinicians in the web-based randomization and data system; and shipping the trial drugs as requested by each participating country.

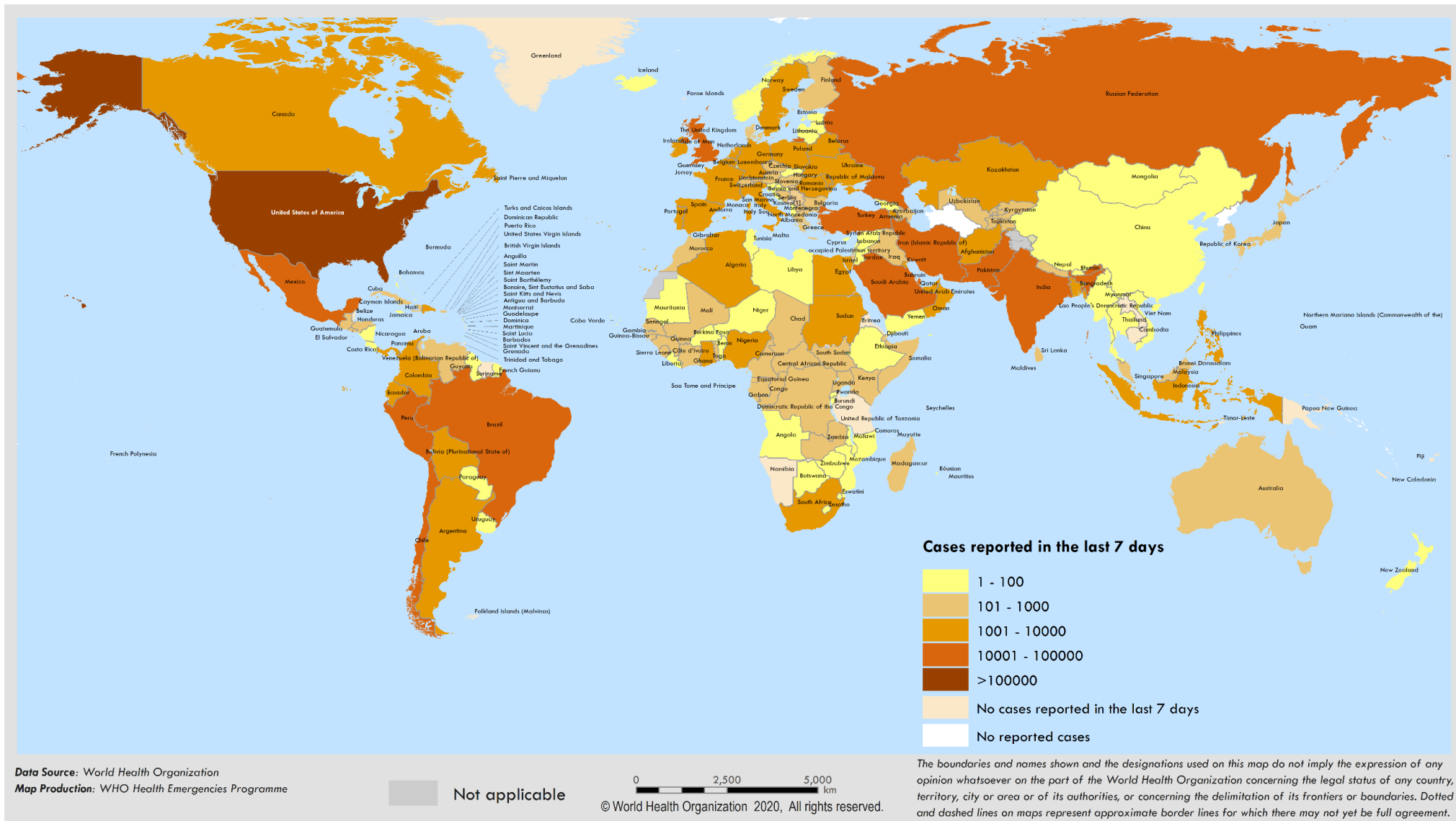
To date, 18 countries from five out of the six WHO regions and representing three out of the four World Bank income groups have started the Solidarity Trial. These 18 countries represent over 245 hospitals with 885 clinicians involved. Patient enrollment is nearing 3000.

By the end of May, we expect another 10-12 countries to start the Solidarity Trial. At that point, we anticipate that an interim trial analysis will be produced and will be monitored by a global Data and Safety Monitoring Committee (DSMC), an independent group of experts.

Further updates on the Solidarity Trial will continue to be made available from this dedicated [WHO webpage](#).

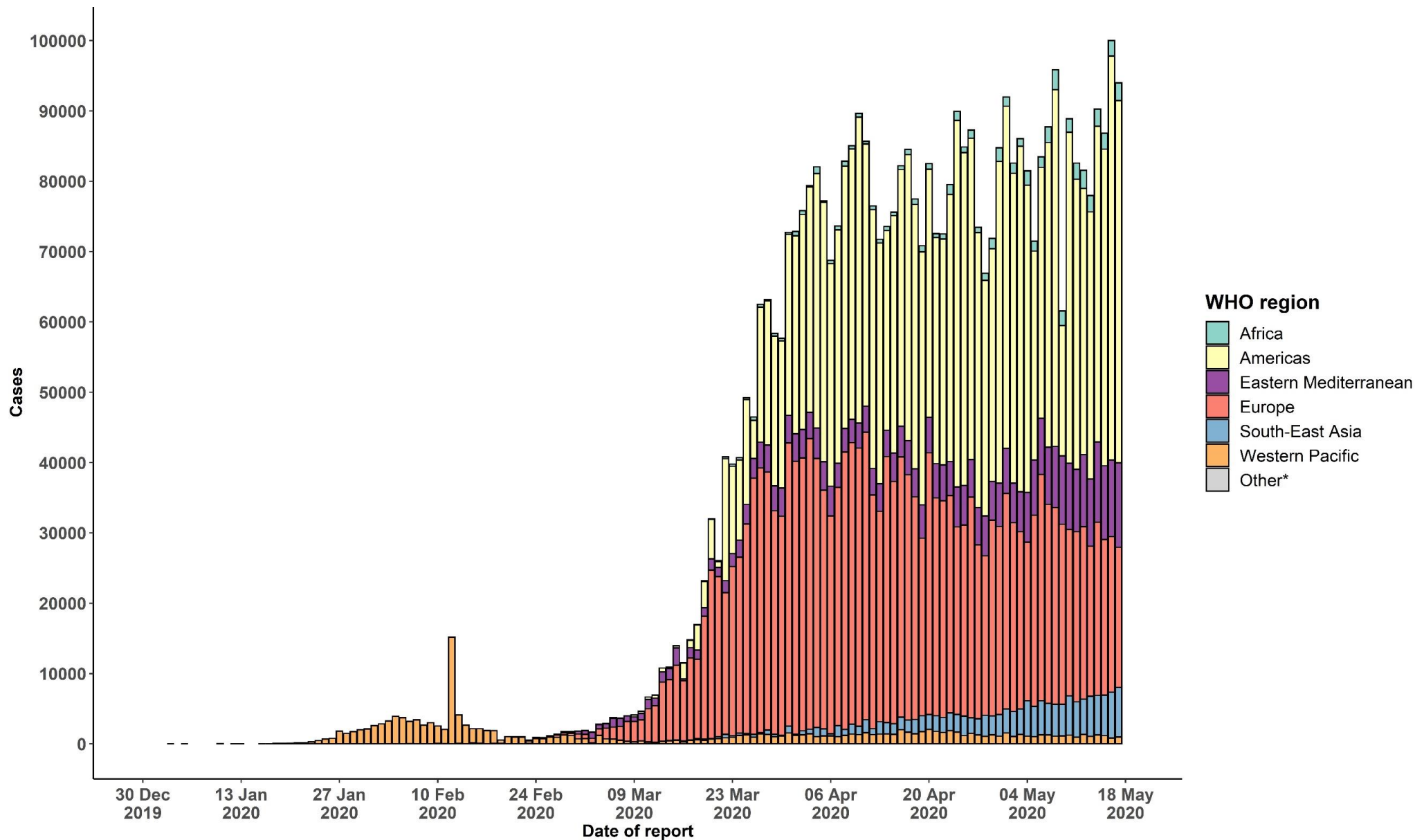
Surveillance

Figure 1. Number of confirmed COVID-19 cases reported in the last seven days by country, territory or area, 12 May to 18 May**



**See Annex 1 for data, table and figure notes.

Figure 2. Number of confirmed COVID-19 cases, by date of report and WHO region, 30 December 2019 through 18 May 2020**



**See [Annex 1](#) for data, table and figure notes.

Table 1. Countries, territories or areas with reported laboratory-confirmed COVID-19 cases and deaths, by WHO region. Data as of 10 AM CEST, 18 May 2020**

Reporting Country/Territory/Area	Total confirmed cases	Total confirmed new cases	Total deaths	Total new deaths	Transmission classification ⁱ	Days since last reported case
Africa						
South Africa	15 515	1 160	264	3	Community transmission	0
Algeria	7 019	198	548	6	Community transmission	0
Nigeria	5 959	338	182	6	Community transmission	0
Ghana	5 735	0	29	0	Community transmission	1
Cameroon	3 047	0	139	0	Community transmission	2
Guinea	2 727	69	16	0	Community transmission	0
Senegal	2 480	51	25	0	Community transmission	0
Côte d'Ivoire	2 109	48	27	2	Community transmission	0
Democratic Republic of the Congo	1 454	0	60	0	Community transmission	1
Gabon	1 320	0	11	0	Community transmission	1
Guinea-Bissau	990	77	4	1	Community transmission	0
Niger	904	15	54	3	Community transmission	0
Kenya	887	57	50	0	Community transmission	0
Mali	860	25	52	4	Community transmission	0
Burkina Faso	796	14	51	0	Community transmission	0
Zambia	753	74	7	0	Community transmission	0
Equatorial Guinea	719	29	7	0	Community transmission	0
United Republic of Tanzania	509	0	21	0	Community transmission	10
Sierra Leone	505	43	32	3	Clusters of cases	0
Chad	503	29	53	3	Community transmission	0
Congo	410	19	15	0	Community transmission	0

Reporting Country/Territory/Area	Total confirmed cases	Total confirmed new cases	Total deaths	Total new deaths	Transmission classification ¹	Days since last reported case
Benin	339	0	2	0	Community transmission	3
Mauritius	332	0	10	0	Clusters of cases	21
Cabo Verde	328	0	3	0	Clusters of cases	1
Central African Republic	327	26	0	0	Sporadic cases	0
Ethiopia	317	11	5	0	Clusters of cases	0
Madagascar	304	21	1	1	Clusters of cases	0
Togo	301	3	11	0	Community transmission	0
Rwanda	292	3	0	0	Sporadic cases	0
South Sudan	282	51	4	3	Clusters of cases	0
Uganda	227	0	0	0	Sporadic cases	1
Liberia	226	3	21	1	Community transmission	0
Eswatini	203	1	2	0	Clusters of cases	0
São Tomé and Príncipe	169	0	7	0	Clusters of cases	1
Mozambique	137	8	0	0	Clusters of cases	0
Malawi	70	5	3	0	Clusters of cases	0
Mauritania	62	22	4	0	Sporadic cases	0
Angola	48	0	2	0	Clusters of cases	3
Zimbabwe	44	0	4	0	Sporadic cases	1
Burundi	42	15	1	0	Clusters of cases	0
Eritrea	39	0	0	0	Sporadic cases	29
Botswana	25	0	1	0	Clusters of cases	1
Gambia	24	1	1	0	Sporadic cases	0
Namibia	16	0	0	0	Sporadic cases	42

Reporting Country/Territory/Area	Total confirmed cases	Total confirmed new cases	Total deaths	Total new deaths	Transmission classification ¹	Days since last reported case
Comoros	11	0	1	0	Community transmission	8
Seychelles	11	0	0	0	Clusters of cases	41
Lesotho	1	0	0	0	Pending	4
Territoriesⁱⁱ						
Mayotte	1 342	84	18	2	Clusters of cases	0
Réunion	443	0	0	0	Clusters of cases	1
Americas						
United States of America	1 432 265	22 813	87 180	1 320	Community transmission	0
Brazil	233 142	14 919	15 633	816	Community transmission	0
Peru	88 541	4 046	2 523	131	Community transmission	0
Canada	76 204	1 211	5 702	107	Community transmission	0
Mexico	47 144	2 112	5 045	278	Community transmission	0
Chile	43 781	2 353	450	29	Community transmission	0
Ecuador	32 723	1 256	2 688	94	Community transmission	0
Colombia	14 939	723	562	16	Community transmission	0
Dominican Republic	12 314	204	428	0	Community transmission	0
Panama	9 449	181	269	3	Community transmission	0
Argentina	7 805	326	366	3	Community transmission	0
Bolivia (Plurinational State of)	3 826	249	165	1	Clusters of cases	0
Honduras	2 565	105	138	4	Community transmission	0
Cuba	1 872	10	79	0	Clusters of cases	0
Guatemala	1 763	120	33	3	Clusters of cases	0
El Salvador	1 338	73	27	2	Clusters of cases	0
Costa Rica	853	10	10	2	Clusters of cases	0

Reporting Country/Territory/Area	Total confirmed cases	Total confirmed new cases	Total deaths	Total new deaths	Transmission classification ⁱ	Days since last reported case
Paraguay	786	8	11	0	Community transmission	0
Uruguay	734	2	19	0	Clusters of cases	0
Venezuela (Bolivarian Republic of)	541	37	10	0	Clusters of cases	0
Jamaica	517	6	9	0	Clusters of cases	0
Haiti	358	48	20	0	Clusters of cases	0
Guyana	117	1	10	0	Clusters of cases	0
Trinidad and Tobago	116	0	8	0	Sporadic cases	20
Bahamas	96	0	11	0	Clusters of cases	2
Barbados	86	1	7	0	Clusters of cases	0
Antigua and Barbuda	25	0	3	0	Clusters of cases	14
Nicaragua	25	0	8	0	Clusters of cases	4
Grenada	22	0	0	0	Clusters of cases	2
Belize	18	0	2	0	Sporadic cases	33
Saint Lucia	18	0	0	0	Sporadic cases	13
Saint Vincent and the Grenadines	17	0	0	0	Sporadic cases	13
Dominica	16	0	0	0	Clusters of cases	37
Saint Kitts and Nevis	15	0	0	0	Sporadic cases	27
Suriname	10	0	1	0	Sporadic cases	44
Territoriesⁱⁱ						
Puerto Rico	2 646	57	123	1	Clusters of cases	0
French Guiana	197	8	1	0	Clusters of cases	0
Martinique	192	0	14	0	Clusters of cases	1
Guadeloupe	155	0	13	0	Clusters of cases	5
Bermuda	123	0	9	0	Clusters of cases	1

Reporting Country/Territory/Area	Total confirmed cases	Total confirmed new cases	Total deaths	Total new deaths	Transmission classification ¹	Days since last reported case
Aruba	101	0	3	0	Sporadic cases	12
Cayman Islands	94	0	1	0	Clusters of cases	1
Sint Maarten	78	0	15	0	Sporadic cases	4
United States Virgin Islands	69	0	6	0	Clusters of cases	7
Saint Martin	39	0	3	0	Sporadic cases	7
Curaçao	16	0	1	0	Sporadic cases	20
Falkland Islands (Malvinas)	13	0	0	0	Clusters of cases	22
Turks and Caicos Islands	12	0	1	0	Sporadic cases	20
Montserrat	11	0	1	0	Sporadic cases	34
British Virgin Islands	8	0	1	0	Sporadic cases	2
Bonaire, Sint Eustatius and Saba	6	0	0	0	Sporadic cases	20
Saint Barthélemy	6	0	0	0	Sporadic cases	48
Anguilla	3	0	0	0	Sporadic cases	44
Saint Pierre and Miquelon	1	0	0	0	Sporadic cases	40
Eastern Mediterranean						
Iran (Islamic Republic of)	120 198	1 806	6 988	51	Community transmission	0
Saudi Arabia	54 752	2 736	312	10	Clusters of cases	0
Pakistan	42 125	1 974	903	30	Clusters of cases	0
Qatar	32 604	1 632	15	0	Community transmission	0
United Arab Emirates	23 358	731	220	6	Pending	0
Kuwait	14 850	1 048	112	5	Clusters of cases	0
Egypt	12 229	510	630	18	Clusters of cases	0
Afghanistan	7 072	437	173	4	Clusters of cases	0
Bahrain	6 930	183	12	0	Clusters of cases	0

Reporting Country/Territory/Area	Total confirmed cases	Total confirmed new cases	Total deaths	Total new deaths	Transmission classification ⁱ	Days since last reported case
Morocco	6 870	129	192	0	Clusters of cases	0
Oman	5 379	193	23	1	Clusters of cases	0
Iraq	3 404	144	123	2	Clusters of cases	0
Sudan	2 591	302	105	8	Community transmission	0
Somalia	1 421	64	56	1	Sporadic cases	0
Djibouti	1 401	70	4	0	Clusters of cases	0
Tunisia	1 037	0	45	0	Community transmission	1
Lebanon	911	9	26	0	Clusters of cases	0
Jordan	613	6	9	0	Clusters of cases	0
Yemen	132	6	21	2	Pending	0
Libya	65	0	3	0	Clusters of cases	1
Syrian Arab Republic	58	7	3	0	Community transmission	0
Territoriesⁱⁱ						
occupied Palestinian territory	560	5	4	0	Clusters of cases	0
Europe						
Russian Federation	290 678	8 926	2 722	91	Clusters of cases	0
The United Kingdom	243 699	3 534	34 636	170	Community transmission	0
Spain	231 350	652	27 650	87	Community transmission	0
Italy	225 435	675	31 908	145	Community transmission	0
Germany	174 697	342	7 935	21	Community transmission	0
Turkey	149 435	1 368	4 140	44	Community transmission	0
France	140 036	28	28 059	481	Community transmission	0
Belgium	55 280	291	9 052	47	Community transmission	0
Netherlands	43 995	125	5 680	10	Community transmission	0

Reporting Country/Territory/Area	Total confirmed cases	Total confirmed new cases	Total deaths	Total new deaths	Transmission classification ¹	Days since last reported case
Switzerland	30 504	15	1 602	1	Community transmission	0
Sweden	30 143	466	3 679	5	Community transmission	0
Belarus	29 650	969	165	5	Community transmission	0
Portugal	29 036	226	1218	15	Community transmission	0
Ireland	24 112	64	1543	10	Community transmission	0
Ukraine	18 616	325	535	21	Community transmission	0
Poland	18 529	272	925	10	Community transmission	0
Romania	16 871	167	1 097	16	Community transmission	0
Israel	16 607	-1	271	3	Pending	0
Austria	16 154	14	629	1	Community transmission	0
Denmark	10 927	69	547	4	Community transmission	0
Serbia	10 610	114	230	2	Pending	0
Czechia	8 475	20	298	2	Community transmission	0
Norway	8 197	0	232	0	Clusters of cases	2
Kazakhstan	6 440	283	34	0	Pending	0
Finland	6 347	61	298	1	Pending	0
Republic of Moldova	6 060	126	211	2	Pending	0
Armenia	4 823	351	61	1	Clusters of cases	0
Luxembourg	3 945	15	107	3	Pending	0
Hungary	3 535	26	462	11	Community transmission	0
Azerbaijan	3 274	136	39	3	Clusters of cases	0
Greece	2 834	15	163	1	Clusters of cases	0
Uzbekistan	2 762	21	12	1	Clusters of cases	0
Bosnia and Herzegovina	2 289	24	132	1	Community transmission	0

Reporting Country/Territory/Area	Total confirmed cases	Total confirmed new cases	Total deaths	Total new deaths	Transmission classification ⁱ	Days since last reported case
Bulgaria	2 235	24	110	2	Clusters of cases	0
Croatia	2 226	2	95	0	Community transmission	0
Iceland	1 802	0	10	0	Community transmission	4
North Macedonia	1 792	30	101	3	Clusters of cases	0
Estonia	1 774	4	63	0	Pending	0
Lithuania	1 541	7	56	1	Community transmission	0
Slovakia	1 494	1	28	0	Clusters of cases	0
Slovenia	1 466	1	104	1	Clusters of cases	0
Tajikistan	1 322	0	39	0	Pending	1
Kyrgyzstan	1 216	78	14	0	Clusters of cases	0
Latvia	1 008	11	19	0	Clusters of cases	0
Albania	948	2	31	0	Clusters of cases	0
Cyprus	916	2	17	0	Clusters of cases	0
Andorra	761	0	51	0	Community transmission	4
Georgia	701	6	12	0	Community transmission	0
San Marino	668	16	41	0	Community transmission	0
Malta	553	7	6	0	Sporadic cases	0
Montenegro	324	0	9	0	Clusters of cases	12
Monaco	96	0	1	0	Sporadic cases	7
Liechtenstein	83	0	1	0	Pending	22
Holy See	12	0	0	0	Sporadic cases	11
Territoriesⁱⁱ						
Kosovo ^[1]	955	11	29	0	Community transmission	0
Isle of Man	335	1	24	0	Pending	0

Reporting Country/Territory/Area	Total confirmed cases	Total confirmed new cases	Total deaths	Total new deaths	Transmission classification ¹	Days since last reported case
Jersey	297	0	27	0	Community transmission	2
Guernsey	252	0	13	0	Community transmission	15
Faroe Islands	187	0	0	0	Pending	24
Gibraltar	147	0	0	0	Clusters of cases	5
Greenland	11	0	0	0	Pending	42
South-East Asia						
India	96 169	5 242	3 029	157	Clusters of cases	0
Bangladesh	22 268	1 273	328	14	Clusters of cases	0
Indonesia	17 514	489	1 148	59	Community transmission	0
Thailand	3 031	3	56	0	Clusters of cases	0
Maldives	1 094	16	4	0	Clusters of cases	0
Sri Lanka	981	21	9	0	Clusters of cases	0
Nepal	304	13	2	1	Sporadic cases	0
Myanmar	187	5	6	0	Clusters of cases	0
Timor-Leste	24	0	0	0	Clusters of cases	24
Bhutan	21	0	0	0	Sporadic cases	2
Western Pacific						
China	84 494	10	4 645	0	Clusters of cases	0
Singapore	28 038	682	22	0	Clusters of cases	0
Japan	16 305	20	749	5	Clusters of cases	0
Philippines	12 513	208	824	7	Community transmission	0
Republic of Korea	11 065	15	263	1	Clusters of cases	0
Australia	7 045	9	98	0	Clusters of cases	0
Malaysia	6 894	22	113	0	Clusters of cases	0

Reporting Country/Territory/Area	Total confirmed cases	Total confirmed new cases	Total deaths	Total new deaths	Transmission classification ⁱ	Days since last reported case
New Zealand	1 149	0	21	0	Clusters of cases	1
Viet Nam	320	2	0	0	Clusters of cases	0
Brunei Darussalam	141	0	1	0	Clusters of cases	10
Mongolia	136	1	0	0	Sporadic cases	0
Cambodia	122	0	0	0	Sporadic cases	36
Lao People's Democratic Republic	19	0	0	0	Sporadic cases	35
Fiji	18	0	0	0	Sporadic cases	27
Papua New Guinea	8	0	0	0	Sporadic cases	25
Territoriesⁱⁱ						
Guam	149	0	5	0	Clusters of cases	3
French Polynesia	60	0	0	0	Sporadic cases	12
Northern Mariana Islands (Commonwealth of the)	21	0	2	0	Pending	1
New Caledonia	18	0	0	0	Sporadic cases	45
Subtotal for all regions	4 618 109	93 324	311 834	4 452		
Other*	712	0	13	0	-	63
Grand total	4 618 821	93 324	311 847	4 452		

**See [Annex 1](#) for data, table and figure notes.

Technical guidance and other resources

- To view all technical guidance documents regarding COVID-19, please go to [this webpage](#).
- Updates from WHO regional offices
 - [WHO AFRO](#)
 - [WHO EMRO](#)
 - [WHO EURO](#)
 - [WHO PAHO](#)
 - [WHO SEARO](#)
 - [WHO WPRO](#)
- [Research and Development](#)
- [Online courses on COVID-19](#) and in [additional national languages](#)
- [The Strategic Preparedness and Response Plan](#) (SPRP) outlining the support the international community can provide to all countries to prepare and respond to the virus
- [WHO Health Emergency dashboard](#)
- [Weekly COVID-19 Operations Updates](#)

Recommendations and advice for the public

- [Protect yourself](#)
- [Questions and answers](#)
- [Travel advice](#)
- [EPI-WIN](#): tailored information for individuals, organizations and communities

Case definitions

WHO periodically updates the [Global Surveillance for human infection with coronavirus disease \(COVID-19\)](#) document which includes surveillance definitions.

Definition of COVID-19 death

COVID-19 death is defined for surveillance purposes as a death resulting from a clinically compatible illness in a probable or confirmed COVID-19 case, unless there is a clear alternative cause of death that cannot be related to COVID-19 disease (e.g. trauma). There should be no period of complete recovery between the illness and death.

Further guidance for certification and classification (coding) of COVID-19 as cause of death is available [here](#).

Annex 1: Data, table and figure notes

Caution must be taken when interpreting all data presented. Differences are to be expected between information products published by WHO, national public health authorities, and other sources using different inclusion criteria and different data cut-off times. While steps are taken to ensure accuracy and reliability, all data are subject to continuous verification and change. Case detection, definitions, testing strategies, reporting practice, and lag times differ between countries/territories/areas. These factors, amongst others, influence the counts presented, with variable underestimation of true case and death counts, and variable delays to reflecting these data at global level.

The designations employed, and the presentation of these materials do not imply the expression of any opinion whatsoever on the part of WHO concerning the legal status of any country, territory or area or of its authorities, or concerning the delimitation of its frontiers or boundaries. Dotted and dashed lines on maps represent approximate border lines for which there may not yet be full agreement. Countries, territories and areas are arranged under the administering WHO region.

^[1] All references to Kosovo should be understood to be in the context of the United Nations Security Council resolution 1244 (1999). In the map, number of cases of Serbia and Kosovo (UNSCR 1244, 1999) have been aggregated for visualization purposes.

Counts reflect laboratory-confirmed cases and deaths, based on [WHO case definitions](#), unless stated otherwise (see *Country, territory, or area-specific updates and errata*), and include both domestic and repatriated cases.

Other*: includes cases reported from an international conveyance (Diamond Princess).

Due to the recent trend of countries conducting data reconciliation exercises which remove large numbers of cases or deaths from their total counts, WHO will now display such data as *negative* numbers in the “new cases” / “new deaths” columns as appropriate. This will aid readers in identifying when such adjustments occur. When additional details become available that allow the subtractions to be suitably apportioned to previous days, graphics will be updated accordingly. Prior situation reports will not be edited; see covid19.who.int for the most up-to-date data.

Additional table notes

ⁱ Transmission classification is based on a process of country/territory/area self-reporting. Classifications are reviewed on a weekly basis, may be revised as new information becomes available, and are based on the highest category reported. Differing degrees of transmission may be present within countries/territories/areas. Categories:

- No cases: with no confirmed cases (not shown in table).
- Sporadic cases: with one or more cases, imported or locally detected.
- Clusters of cases: experiencing cases, clustered in time, geographic location and/or by common exposures.
- Community transmission: experiencing larger outbreaks of local transmission defined through an assessment of factors including, but not limited to: large numbers of cases not linkable to transmission chains; large numbers of cases from sentinel lab surveillance; and/or multiple unrelated clusters in several areas of the country/territory/area.
- Pending: transmission classification has not been reported to WHO.

ⁱⁱ “Territories” include territories, areas, overseas dependencies and other jurisdictions of similar status.

Country, territory, or area-specific updates and errata

None