

# COVID-19 Epidemiology Sri Lanka

## Epidemiology Unit Ministry of Health

31<sup>st</sup> August 2022

27.01.2020-31.08.2022

**669,957**

Total Number of Cases

**16,698**

Total Number of Deaths

Number Vaccinated

At least 1<sup>st</sup> dose: 17,113,187

2<sup>nd</sup> dose : 14,596,364

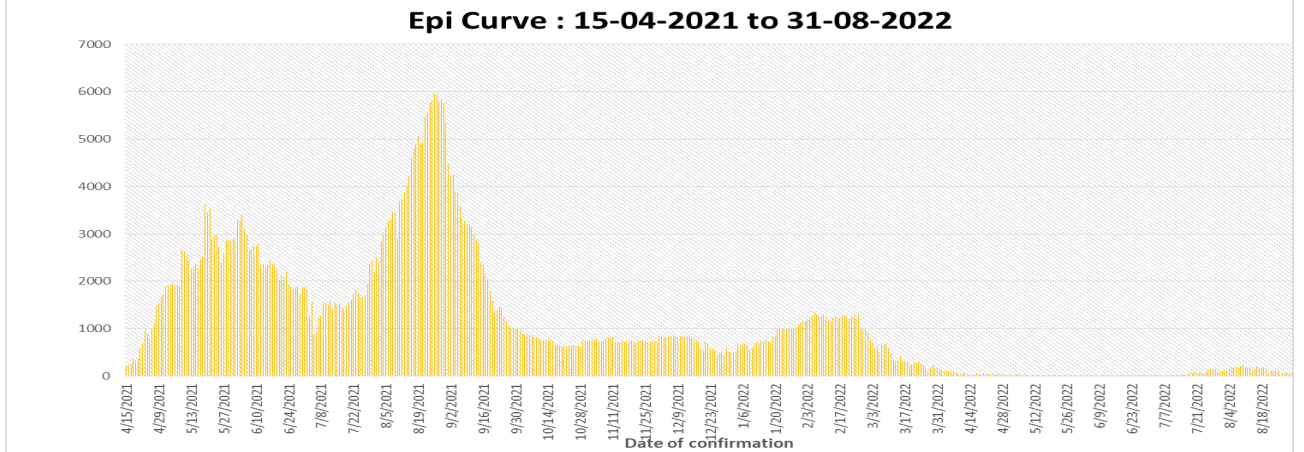
1<sup>st</sup> booster : 8,087,869

2<sup>nd</sup> booster : 164,248

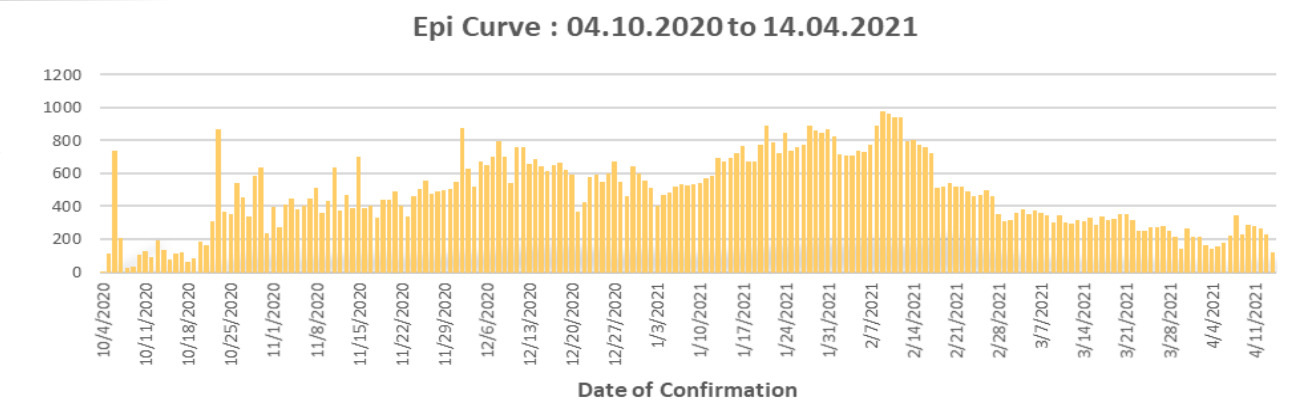
	Duration	No. of Cases	No. of Deaths	Case* Fatality Rate
1 <sup>st</sup> wave	27.01.2020-03.10.2020	3,396	13	0.38
2 <sup>nd</sup> wave	04.10.2020-14.04.2021	92,341	591	0.64
3 <sup>rd</sup> wave	15.04.2021-30.06.2022	574,220	16,094	2.80

\* Case is defined as a laboratory confirmed patient

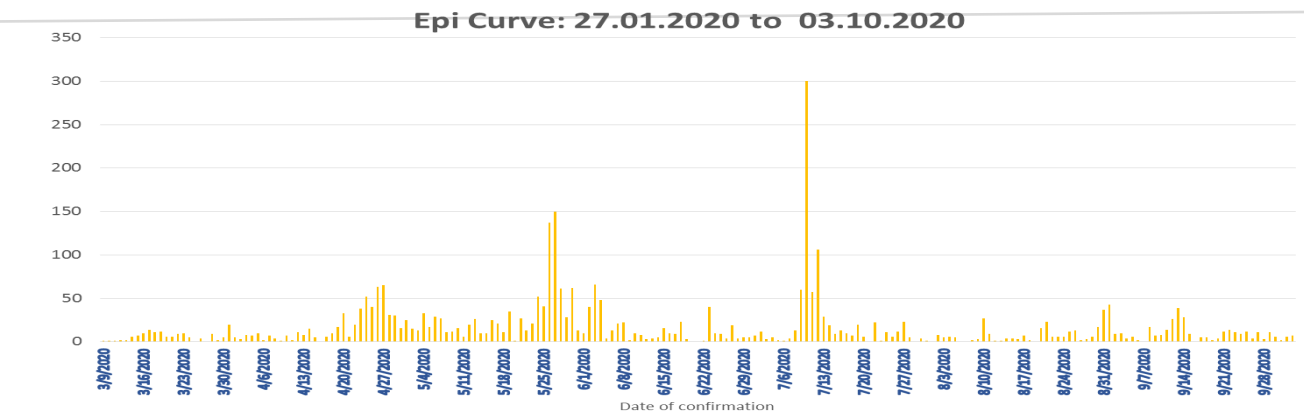
3<sup>rd</sup> wave



2<sup>nd</sup> wave



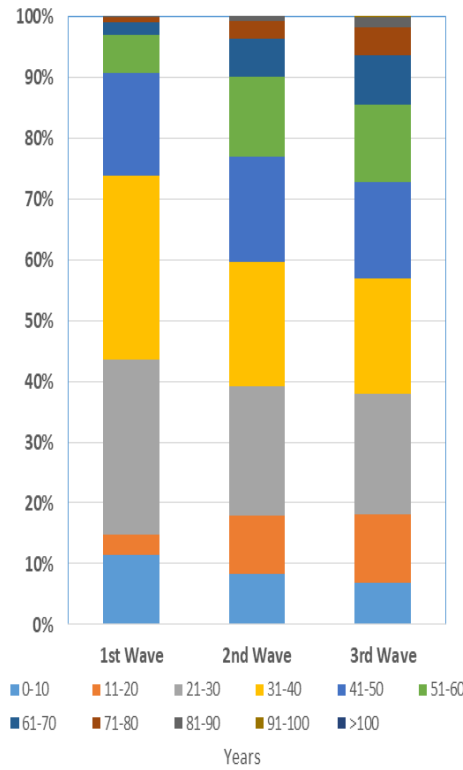
1<sup>st</sup> wave



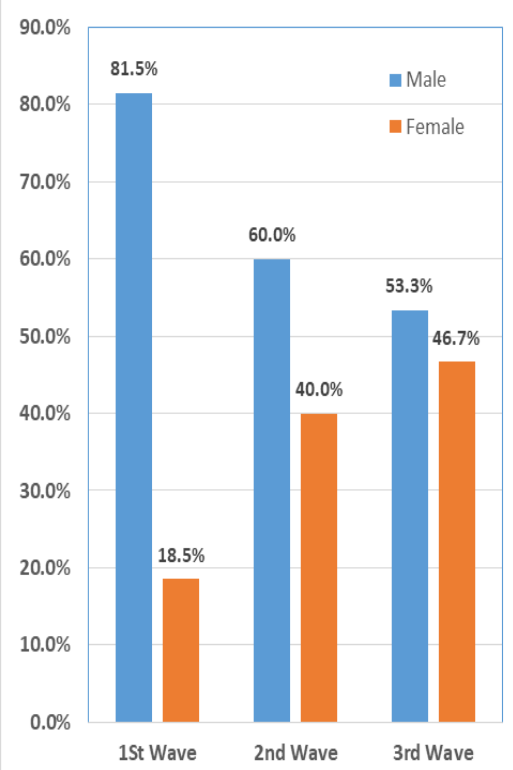
### COVID-19 Cases : District Distribution

District	1 <sup>st</sup> wave	2 <sup>nd</sup> wave	3 <sup>rd</sup> wave	Total
Colombo	174	32123	110889	143186
Gampaha	51	18483	96915	115449
Kalutara	72	6986	51617	58675
Kandy	19	5710	16678	22407
Kurunegala	30	3191	28346	31567
Galle	4	2645	43172	45821
Ratnapura	9	3654	20078	23741
Matara	4	1544	21763	23311
Matale	5	1214	14342	15561
Nuwara Eliya	2	1259	11077	12338
Kegalle	10	1770	11682	13462
Jaffna	16	1441	10883	12340
Badulla	4	1358	13285	14647
Puttalam	39	1024	14301	15364
Anuradhapura	31	820	14239	15090
Hambantota	3	710	19464	20177
Trincomalee	4	651	3732	4387
Monaragala	6	545	14736	15287
Polonnaruwa	10	475	4775	5260
Ampara	9	498	13567	14074
Kalmunai	18	1296	3912	5226
Batticaloa	1	699	9184	9884
Vavuniya	2	623	3040	3665
Mullaitivu	0	278	2008	2286
Kilinochchi	0	250	9776	10026
Mannar	0	379	2148	2527

### COVID-19 Cases by Age Group

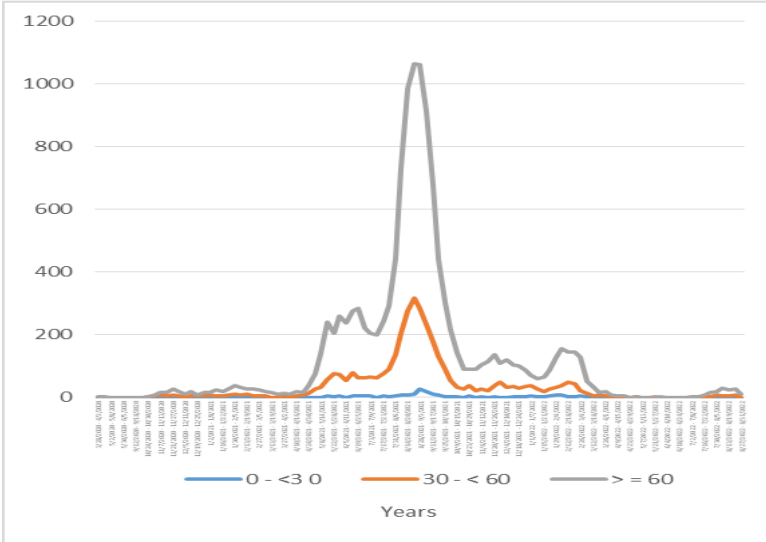


### COVID-19 Cases by Sex

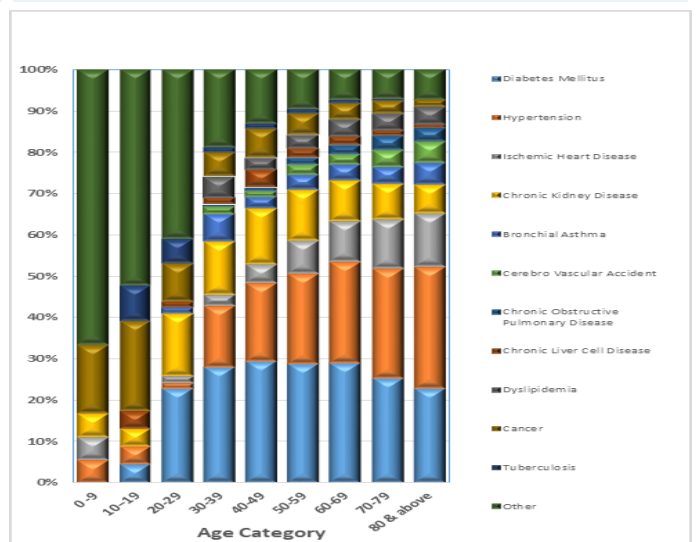


## Confirmed COVID-19 Deaths

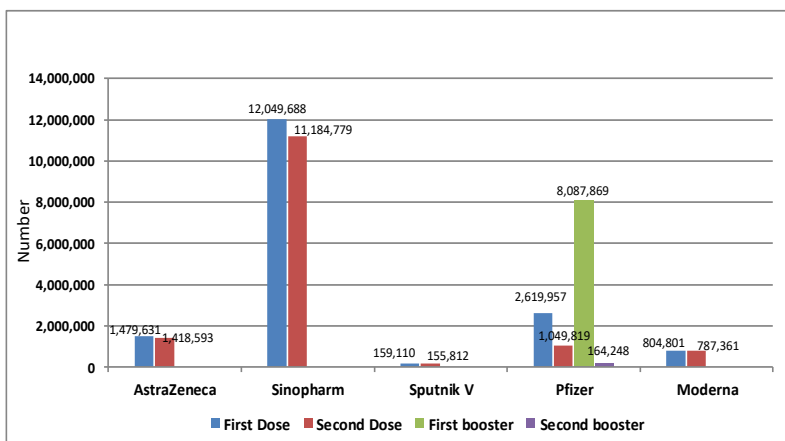
COVID-19 deaths— weekly distribution by age: 28.03.2020 – 31.08.2022



Confirmed COVID-19 deaths by Co-morbidities



## Covid-19 Vaccination Program



## Confirmed COVID-19 deaths by sex

